



6741 VARIEL AVENUE - CANOGA PARK - CALIFORNIA 91303 - PHONE: (213) 348-1391

SCHEMATIC AND
LOGIC DIAGRAMS
MODEL FD360

The information contained herein is proprietary to iCOM, inc. and should not be reproduced, distributed, and/or disclosed outside your organization.

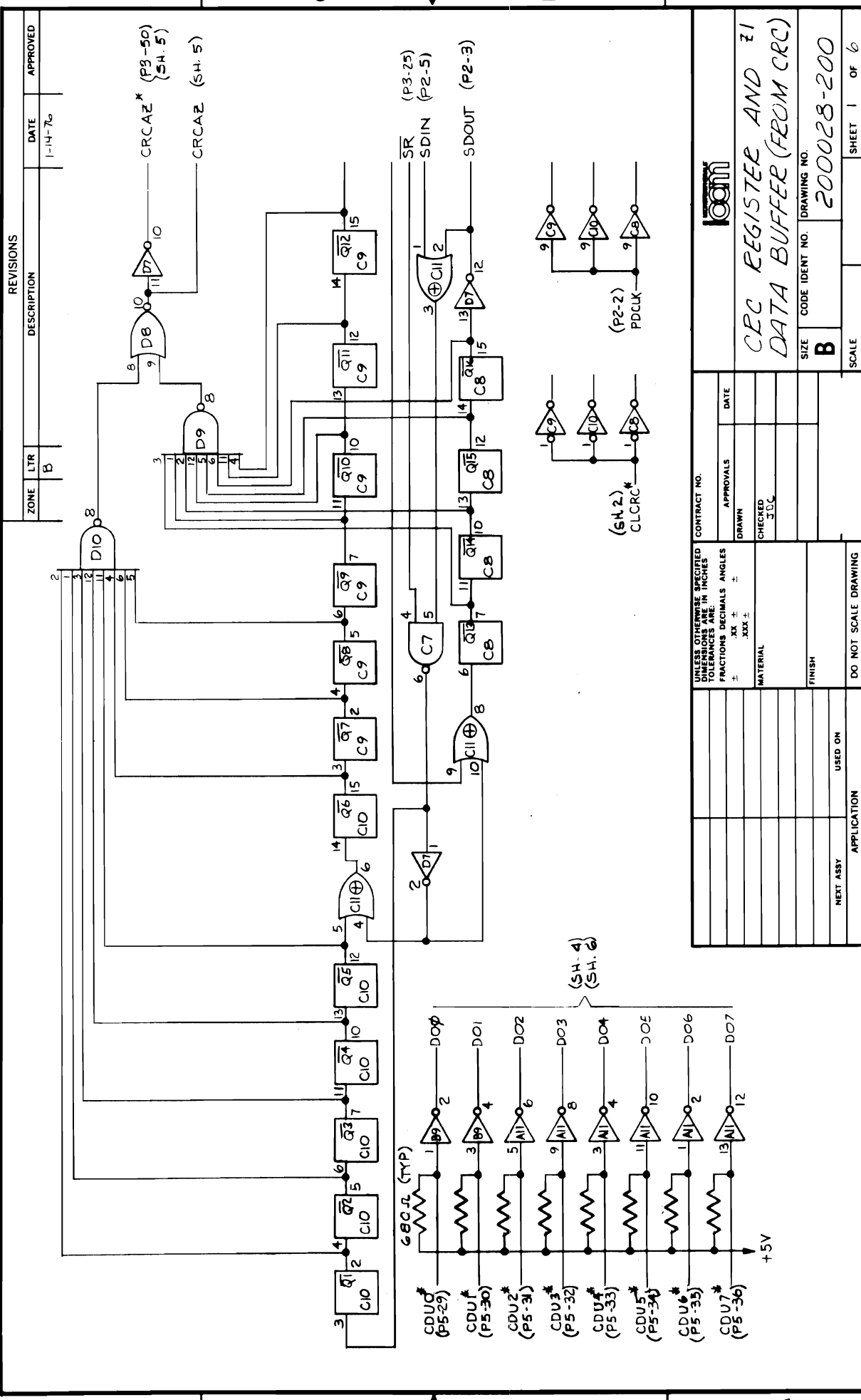
DRAWING NUMBERS PCS

Z1 200028-200

Z2 200028-201

Mux 200012-200

March 1976



REVISIONS	DATE	APPROVED
DESCRIPTION	1-14-76	

ZONE	LTR
B	B

CONTRACT NO.	APPROVALS	DATE
	DRAWN	
	CHECKED	
	3UC	

UNLESS OTHERWISE SPECIFIED DIMENSIONS ARE IN INCHES	FRACTIONS DECIMALS ANGLES
± .XX ± .XXX ±	± .XX ± .XXX ±
MATERIAL	FINISH
DO NOT SCALE DRAWING	USED ON
APPLICATION	SCALE

CRCAZ* (P9-50) (SH. 5)
 CRCAZ (SH. 5)
 SR (P3-25)
 SDIN (P2-5)
 SDOU (P2-3)
 (SH. 2) CLCRC*
 (P2-2) PDCLK

CRCAZ* (P9-50) (SH. 5)
 CRCAZ (SH. 5)
 SR (P3-25)
 SDIN (P2-5)
 SDOU (P2-3)
 (SH. 2) CLCRC*
 (P2-2) PDCLK

CRCAZ* (P9-50) (SH. 5)
 CRCAZ (SH. 5)
 SR (P3-25)
 SDIN (P2-5)
 SDOU (P2-3)
 (SH. 2) CLCRC*
 (P2-2) PDCLK

CRCAZ* (P9-50) (SH. 5)
 CRCAZ (SH. 5)
 SR (P3-25)
 SDIN (P2-5)
 SDOU (P2-3)
 (SH. 2) CLCRC*
 (P2-2) PDCLK

CRCAZ* (P9-50) (SH. 5)
 CRCAZ (SH. 5)
 SR (P3-25)
 SDIN (P2-5)
 SDOU (P2-3)
 (SH. 2) CLCRC*
 (P2-2) PDCLK

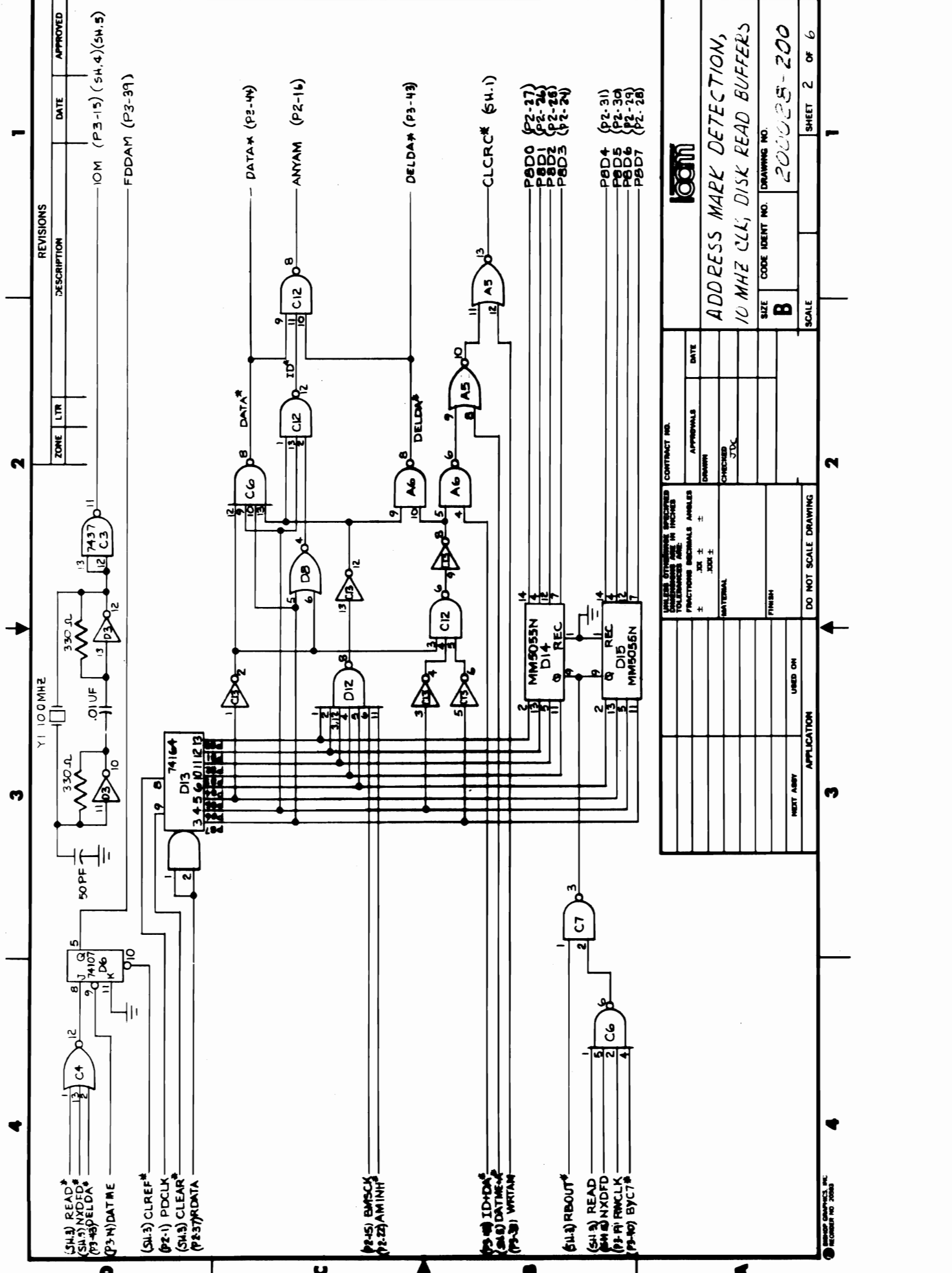
CRCAZ* (P9-50) (SH. 5)
 CRCAZ (SH. 5)
 SR (P3-25)
 SDIN (P2-5)
 SDOU (P2-3)
 (SH. 2) CLCRC*
 (P2-2) PDCLK

CRCAZ* (P9-50) (SH. 5)
 CRCAZ (SH. 5)
 SR (P3-25)
 SDIN (P2-5)
 SDOU (P2-3)
 (SH. 2) CLCRC*
 (P2-2) PDCLK

CRCAZ* (P9-50) (SH. 5)
 CRCAZ (SH. 5)
 SR (P3-25)
 SDIN (P2-5)
 SDOU (P2-3)
 (SH. 2) CLCRC*
 (P2-2) PDCLK

CRCAZ* (P9-50) (SH. 5)
 CRCAZ (SH. 5)
 SR (P3-25)
 SDIN (P2-5)
 SDOU (P2-3)
 (SH. 2) CLCRC*
 (P2-2) PDCLK

100M
ADDRESS MARK DETECTION,
10 MHZ CLK, DISK READ BUFFERS



REVISED	DESCRIPTION	DATE	APPROVED
1	10M (P3-15) (SH.4) (SH.5) FDDAM (P3-39)		

ZONE	LTR

UNLESS OTHERWISE SPECIFIED
DIMENSIONS ARE IN INCHES
FRACTIONS DECIMALS ANGLES
INCHES .001 INCHES
DECIMALS .0001 INCHES
ANGLES .001 DEGREES
MATERIAL
FINISH
DO NOT SCALE DRAWING

CONTRACT NO.	DATE

APPROVALS

DRAWN	CHECKED	DATE

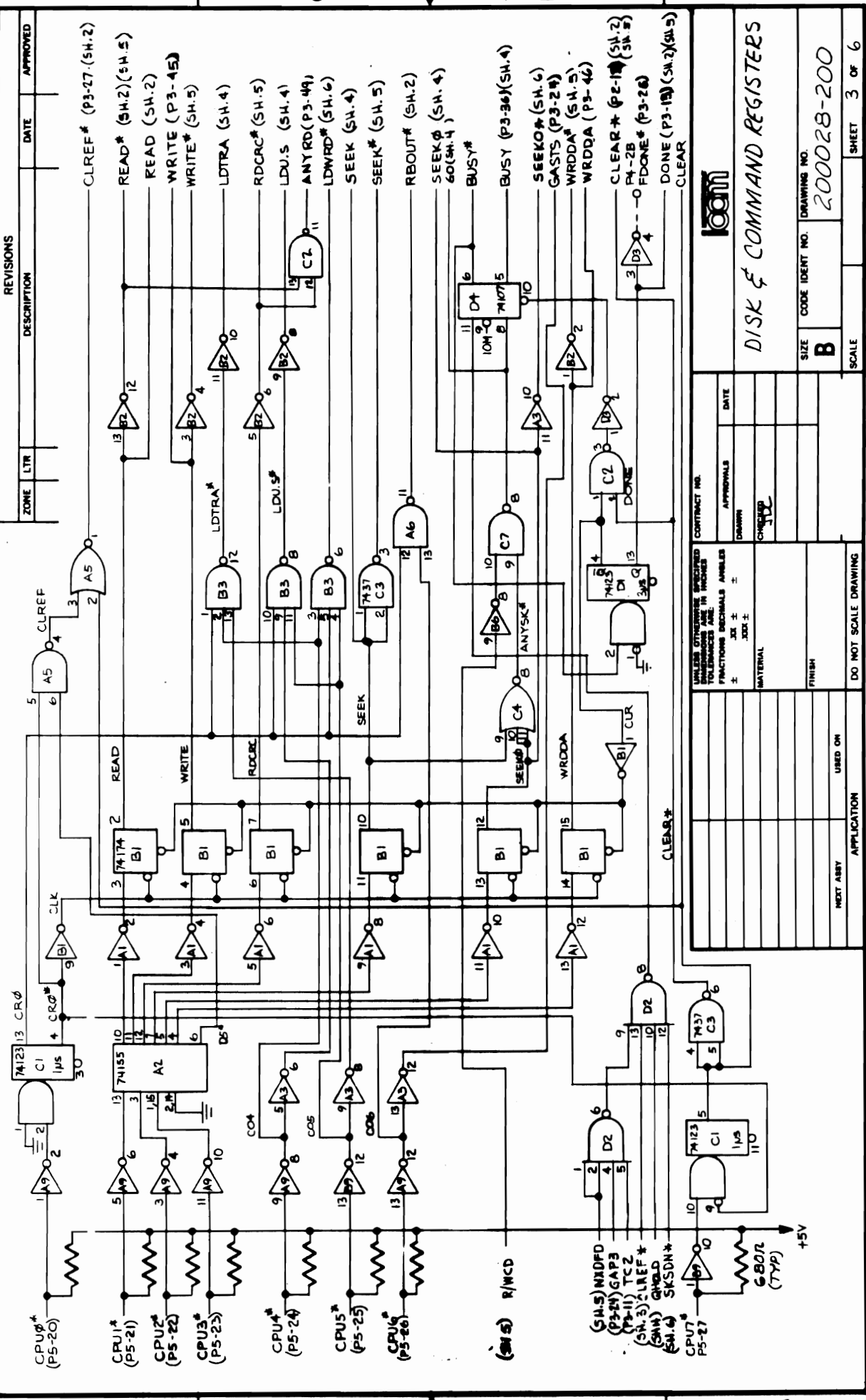
SIZE	CODE IDENT NO.	DRAWING NO.
B	200025-200	

SCALE SHEET 2 OF 6

100M
ADDRESS MARK DETECTION,
10 MHZ CLK, DISK READ BUFFERS

ITEM ASBY	USED ON	APPLICATION

RECORDED NO. 2028



ZONE	LTR	DESCRIPTION	DATE	APPROVED

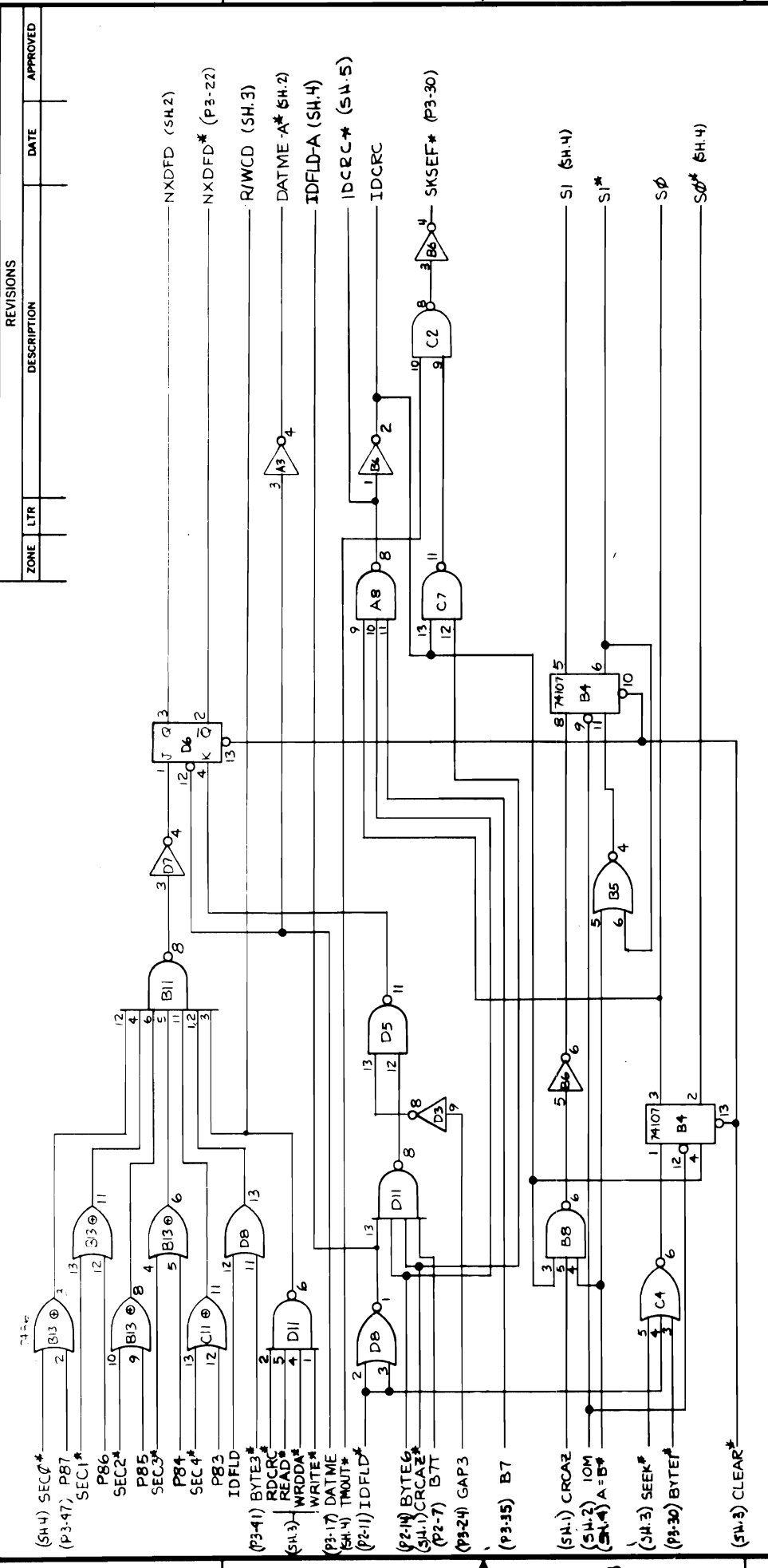
CONTRACT NO.	
APPROVALS	
DATE	
DRAWN	
CHECKED	
MATERIAL	
FINISH	
USED ON	
APPLICATION	
DO NOT SCALE DRAWING	

IBM
DISK & COMMAND REGISTERS
 SIZE CODE IDENT NO. DRAWING NO. 200028-200
 SCALE SHEET 3 OF 6

REVISIONS

CLREF* (P3-27) (SH.2)
 READ* (SH.2) (SH.5)
 WRITE (SH.2)
 WRITE* (P3-45) (SH.5)
 LDTRA* (SH.4)
 RDCRC* (SH.5)
 LDU.S (SH.4)
 ANYRD (P3-49) (SH.6)
 LDWRD* (SH.6)
 SEEK (SH.4)
 SEEK* (SH.5)
 RBOU* (SH.2)
 SEEKφ (SH.4)
 60 (SH.4)
 BUSY*
 BUSY (P3-36) (SH.4)
 SEEKφ (SH.6)
 GASTS (P3-24)
 WRDDA* (SH.5)
 WRDDA (P3-46)
 CLEAR* (P2-18) (SH.2)
 P4-2B (P3-26)
 FDONE* (P3-26)
 DONE (P3-18) (SH.2) (SH.5)
 CLEAR

CPUφ* (P5-20)
 CPU1* (P5-21)
 CPU2* (P5-22)
 CPU3* (P5-23)
 CPU4* (P5-24)
 CPU5* (P5-25)
 CPU6* (P5-26)
 R/WCD
 (SH.5)
 (SH.5) MDPD
 (P3-24) GAP3
 (P4-1) TC2
 (SH.3) CLREF*
 (SH.4) GHELD
 (SH.4) SKSDH*
 CPU7 P5-27
 G80L (TYP)
 +5V

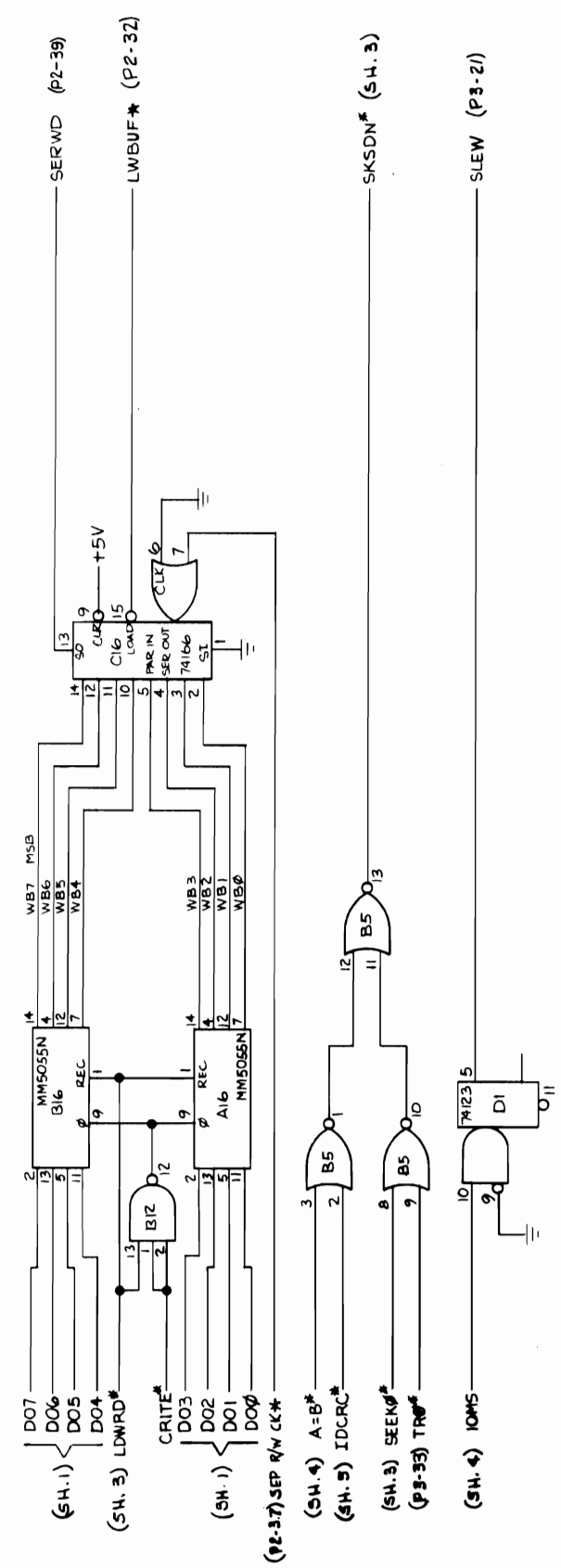


REVISIONS		DATE	APPROVED
ZONE	LTR		
DESCRIPTION			

CONTRACT NO.		DATE
APPROVALS	DRAWN	
CHECKED	JDC	
MATERIAL		
FINISH		
DO NOT SCALE DRAWING		
USED ON	APPLICATION	
NEXT ASSY		

SEEK TRACK, SECTOR SEEK	
SIZE	DRAWING NO.
B	200028-200
SCALE	SHEET 5 OF 6

REVISIONS		DATE	APPROVED
ZONE	LTR		



1

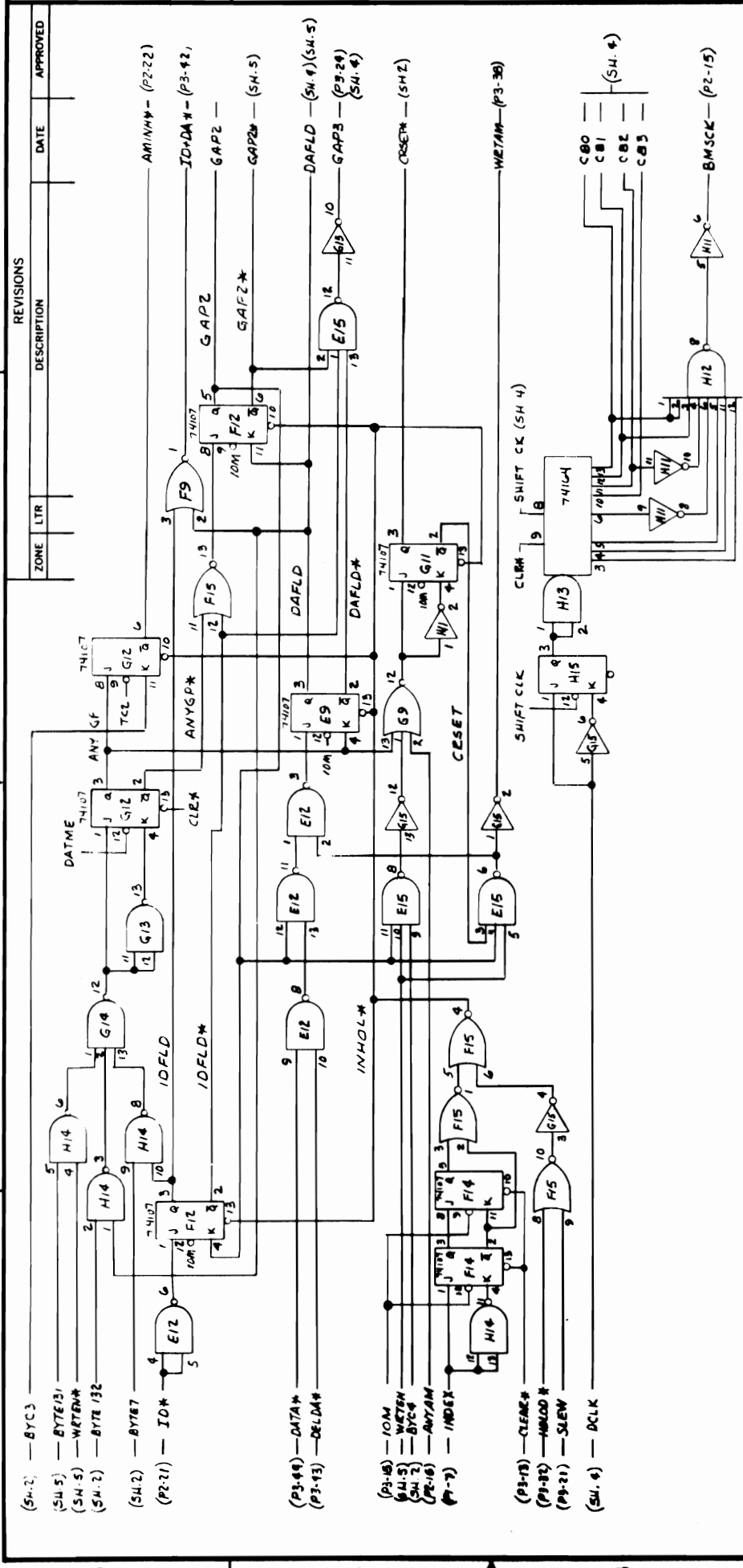
2

3

4

CONTRACT NO.		DATE	
APPROVALS		DATE	
DRAWN		CHECKED	
JDC		SCALE	
UNLESS OTHERWISE SPECIFIED DIMENSIONS ARE IN INCHES TOLERANCES ARE		DRAWING NO.	
± .XX ±		200028-200	
± .XX ±		DRAWING NO.	
± .XX ±		200028-200	
MATERIAL		SCALE	
FINISH		SHEET 6 OF 6	
DO NOT SCALE DRAWING		SHEET 6 OF 6	
NEXT ASSY		APPLICATION	
USED ON		SCALE	
APPLICATION		SHEET 6 OF 6	

WRITE BUFFER AND
COMMAND BUFFERS (FROM CPU)



UNLESS OTHERWISE SPECIFIED
DIMENSIONS ARE IN INCHES
FRACTIONS DECIMALS ANGLES
± .XX ± .XXX ±

DO NOT SCALE DRAWING
MATERIAL
FINISH
APPLICATION
USED ON
NEXT Assy

CONTRACT NO.	APPROVALS	DATE
	DRAWN	
	CHECKED	

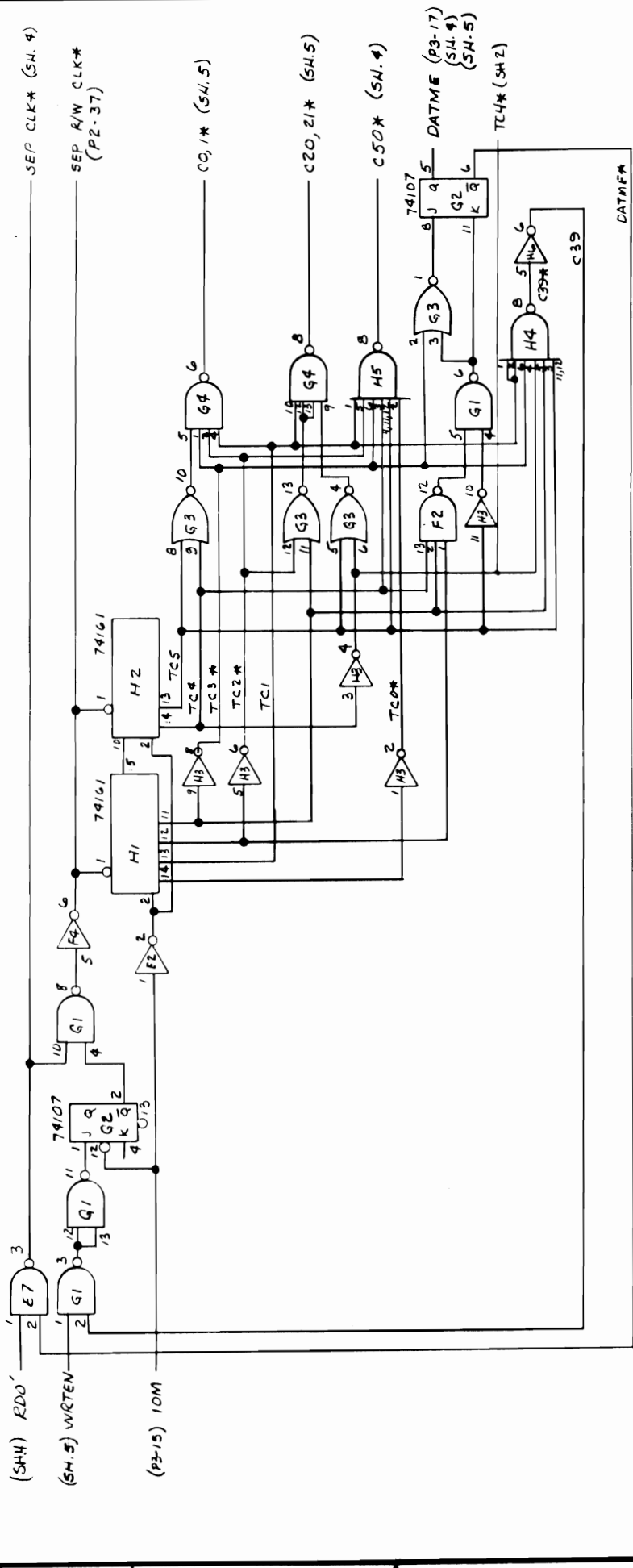
CLOCK REGISTER, BYTE COUNTER,
DISK ID, DATA,
GAP STATE LATCHES

SIZE CODE IDENT NO. DRAWING NO.
B 200028-201

SHEET 1 OF 6

REVISIONS		DATE	APPROVED
ZONE	LTR		

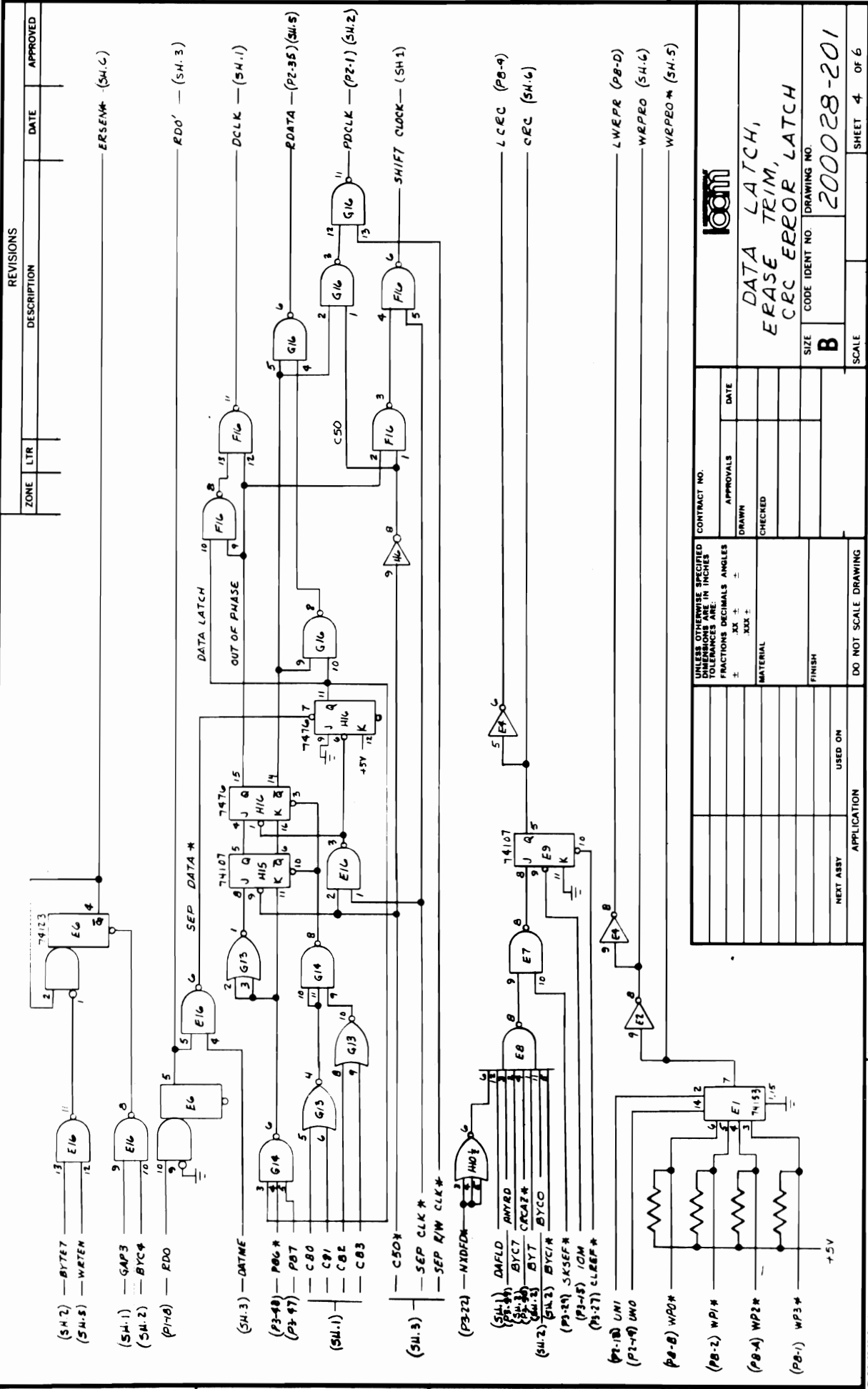
ZONE	LTR	DESCRIPTION	DATE	APPROVED



CONTRACT NO.		DATE	
APPROVALS		DATE	
DRAWN		DATE	
CHECKED		DATE	
MATERIAL		DO NOT SCALE DRAWING	
FINISH		USED ON	
NEXT ASSY		APPLICATION	

UNLESS OTHERWISE SPECIFIED DIMENSIONS ARE IN INCHES TOLERANCES ARE		DRAWING NO.	
FRACTIONS DECIMALS ANGLES		200028-201	
± .XX ± .XXX ±		SIZE CODE IDENT NO.	
± .XX ± .XXX ±		B	
MATERIAL		SCALE	
FINISH		SHEET 3 OF 6	
NEXT ASSY		DRAWING NO.	
APPLICATION		200028-201	
USED ON		SCALE	
DO NOT SCALE DRAWING		SHEET 3 OF 6	

DATA SEPARATOR
 CONTRACT NO. 200028-201
 DRAWING NO. 200028-201
 SIZE CODE IDENT NO. B
 SCALE
 SHEET 3 OF 6



REVISIONS		DATE	APPROVED
ZONE	LTR		

DESCRIPTION	DATE	APPROVED

DATE	DESCRIPTION	DATE	APPROVED

UNLESS OTHERWISE SPECIFIED DIMENSIONS ARE IN INCHES FRACTIONS DECIMALS ANGLES .XX ± .XXX ±

CONTRACT NO.

APPROVALS

DATE

DRAWN

CHECKED

DATE

MATERIAL

FINISH

DO NOT SCALE DRAWING

SCALE

SIZE

CODE IDENT NO.

DRAWING NO.

SHEET 5 OF 6

1

2

3

4

1

2

3

4

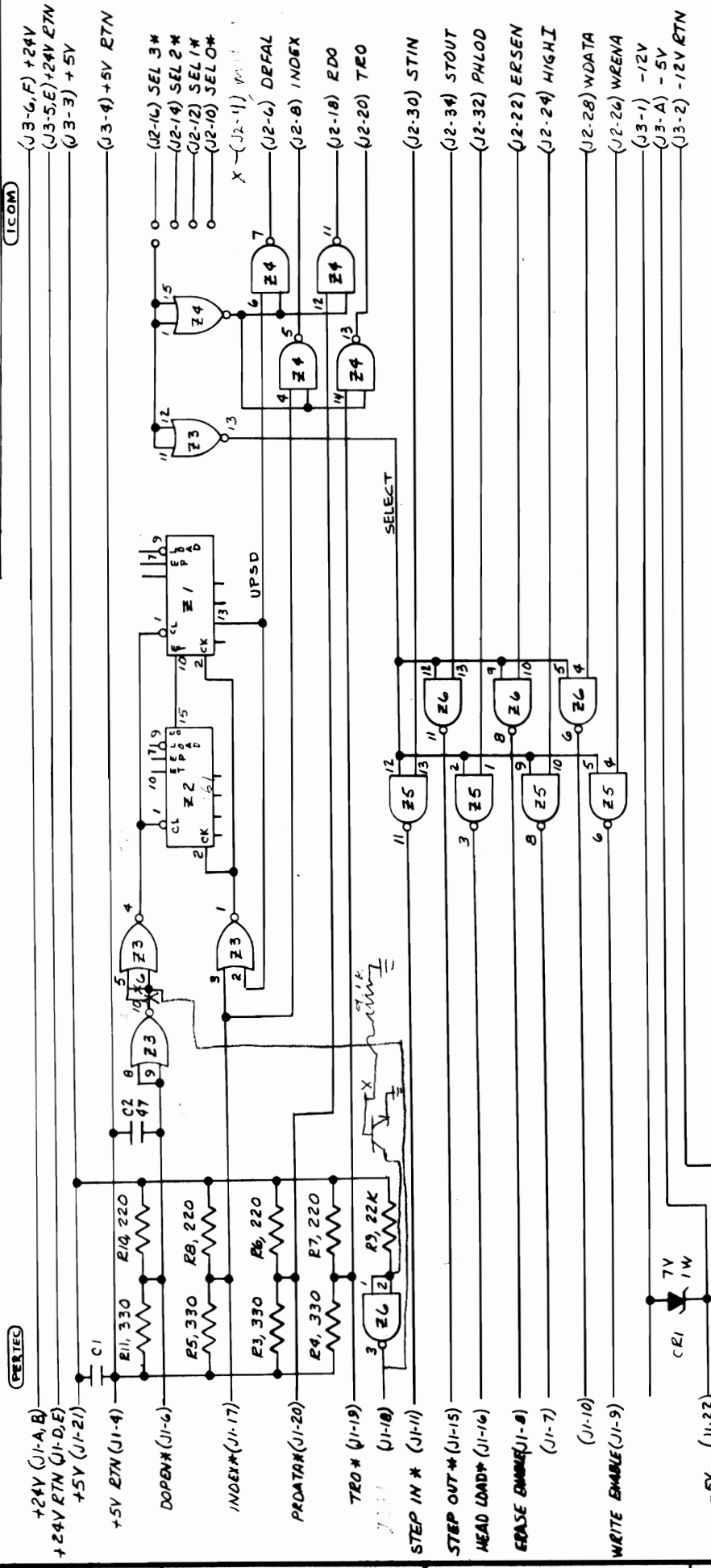


DISK WRITE LOGIC

200028-201

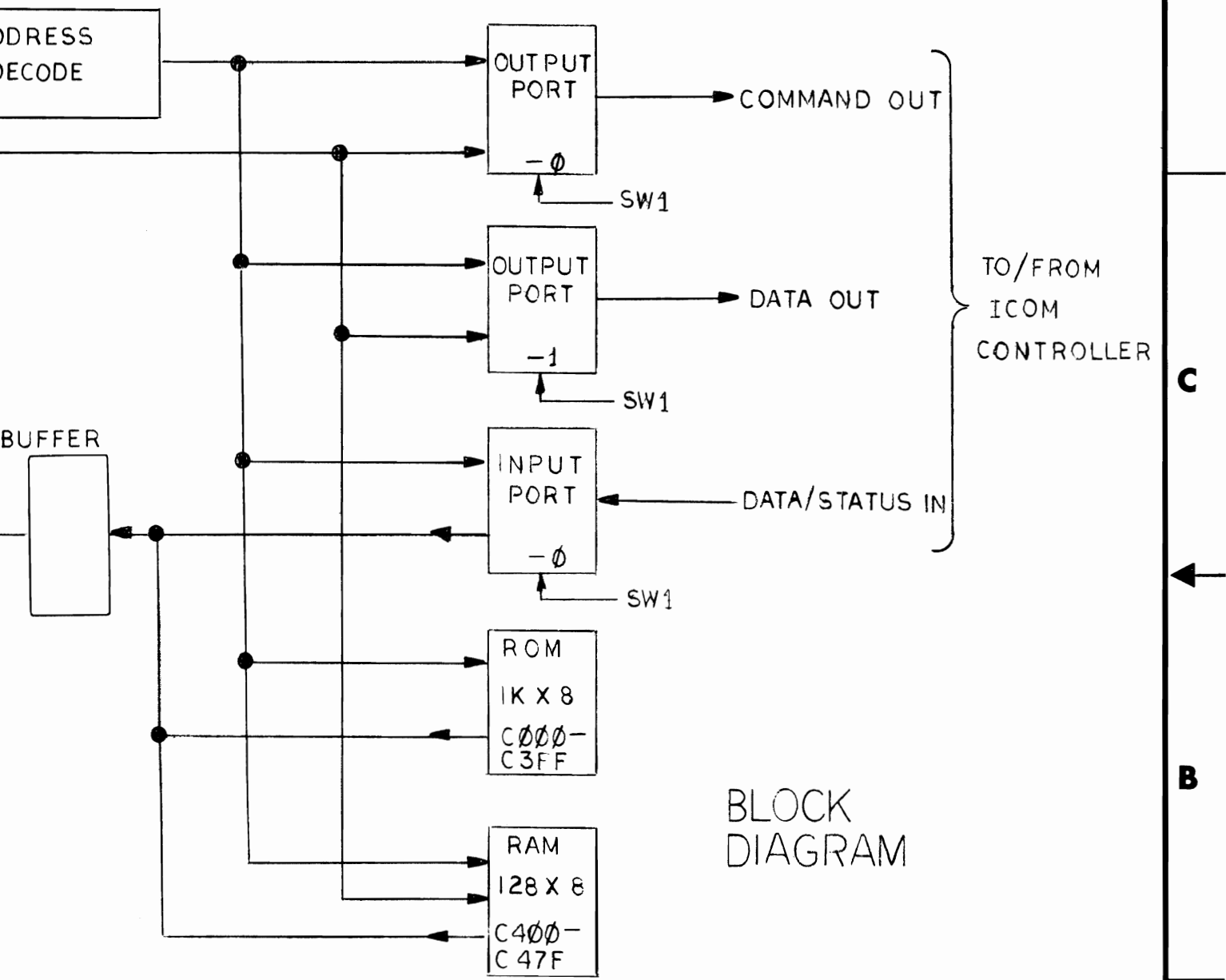
BRAD GRAPHICS, INC. REC'D NO. 70051

REVISIONS			
ZONE	LTR	DESCRIPTION	DATE
A		REDRAWN WAS 'A' SIZE	5/5/76
			APPROVED



CONTRACT NO.		DATE	
APPROVALS	DATE	APPROVALS	DATE
DRAWN	9/5/76		
CHECKED			
UNLESS OTHERWISE SPECIFIED TOLERANCES ARE IN INCHES			
FRACTIONS DECIMALS ANGLES			
± .XX ± .XXX ± .XXX ±			
MATERIAL		FINISH	
DO NOT SCALE DRAWING		DO NOT SCALE DRAWING	
NEXT ASSY	APPLICATION	USED ON	
REMOTE MUX			
SIZE	CODE IDENT NO.	DRAWING NO.	
B		200012-200	
SCALE			SHEET 1 OF 1

REVISIONS				
ZONE	LTR	DESCRIPTION	DATE	APPROVED
	A	RELEASED (SEE HISTORY FILE FOR N/C REV)	9/22/76	SWG
	B	SEE HISTORY FILE	9/23/76	SWG



D

C

B

A

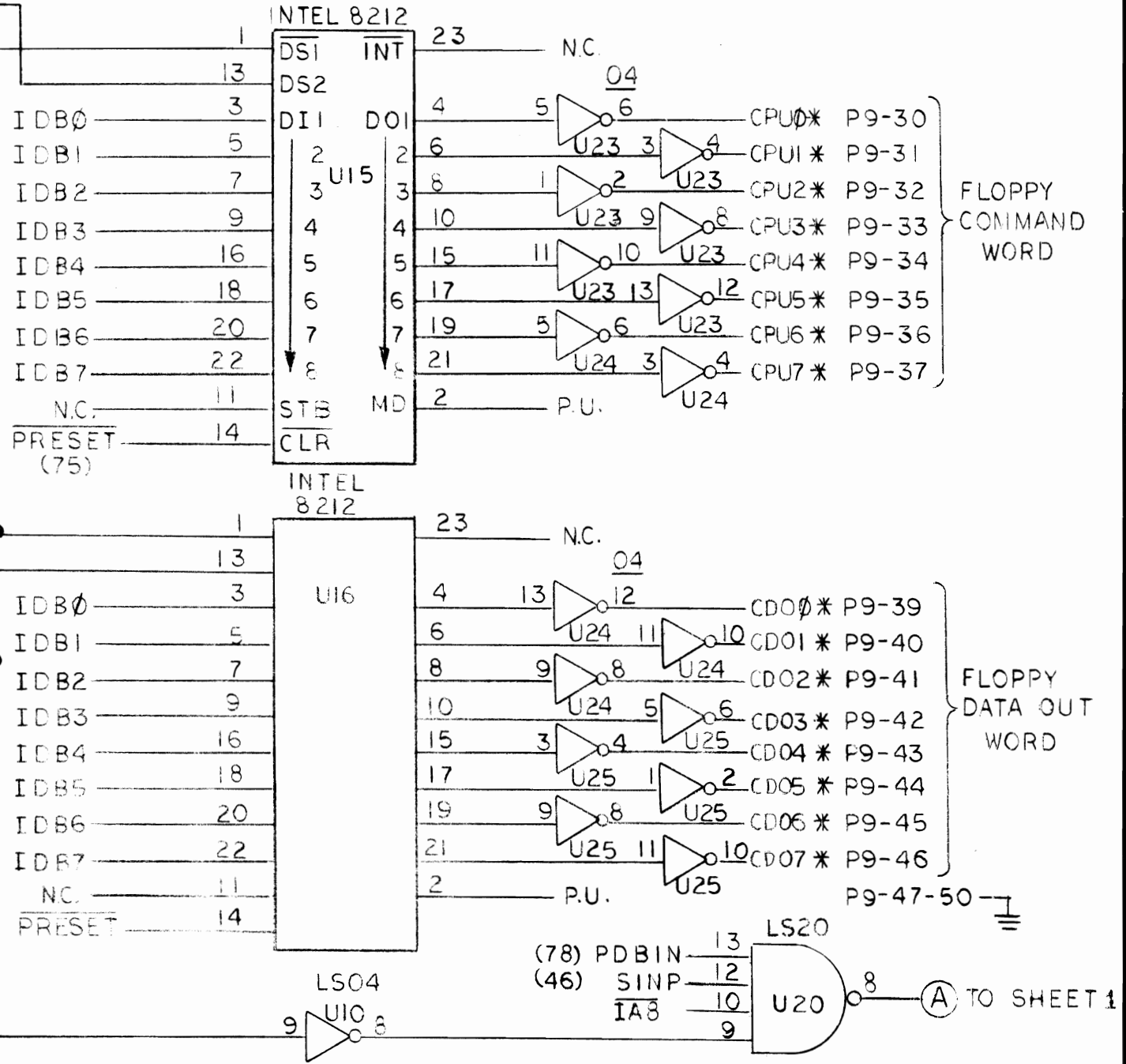
UNLESS OTHERWISE SPECIFIED DIMENSIONS ARE IN INCHES TOLERANCES ARE:
FRACTIONS DECIMALS ANGLES ± .XX ± ± .XXX ±
MATERIAL
FINISH
DO NOT SCALE DRAWING

CONTRACT NO.	
APPROVALS	DATE
DRAWN <i>J. Fazio</i>	
CHECKED	

SCHEMATIC, 8800 INTERFACE		
SCALE		SHEET 1 OF 3

REVISIONS

ZONE	LTR	DESCRIPTION	DATE	APPROVED



D

C

B

A

UNLESS OTHERWISE SPECIFIED DIMENSIONS ARE IN INCHES TOLERANCES ARE:

FRACTIONS DECIMALS ANGLES
 ± .XX ± ±
 .XXX ±

MATERIAL	CHECKED
FINISH	

DO NOT SCALE DRAWING

CONTRACT NO.	
APPROVALS	DATE
DRAWN	
CHECKED	

SCHEMATIC, 8800 INTERFACE		
SIZE B	CODE IDENT NO.	DRAWING NO. 200057-200 B
SCALE		SHEET 2 OF 3

4

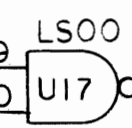
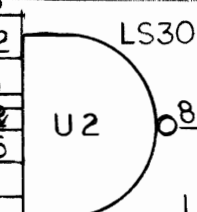
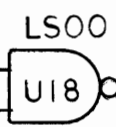
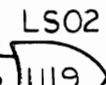
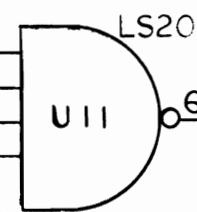
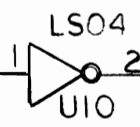
3

D

(68) MWRITE

IA10
IA9
IA8
IA7

IA15
IA14
IA13
IA12
IA11

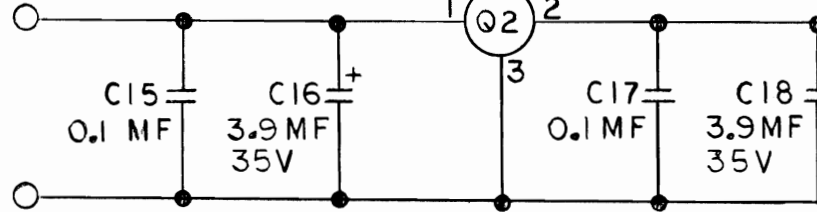


CERAM

(47)
LS00 S MEMR
II ERAR

C

+16 UNREG (2)



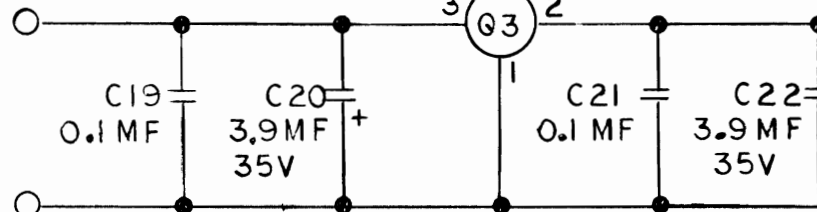
GND (50,100)

+12V

LM320T-5

B

-16 UNREG (52)



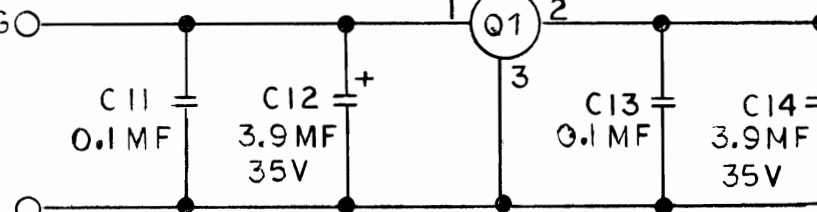
GND (50,100)

-5V

LM340T-5

A

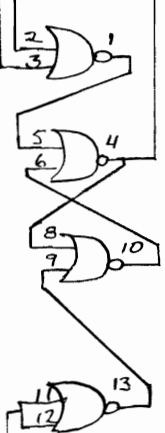
+8V UNREG (1,51)



GND (50,100)

+5V

RESET (75)



Ux

NEXT ASSY	USED ON
APPLICATION	

4

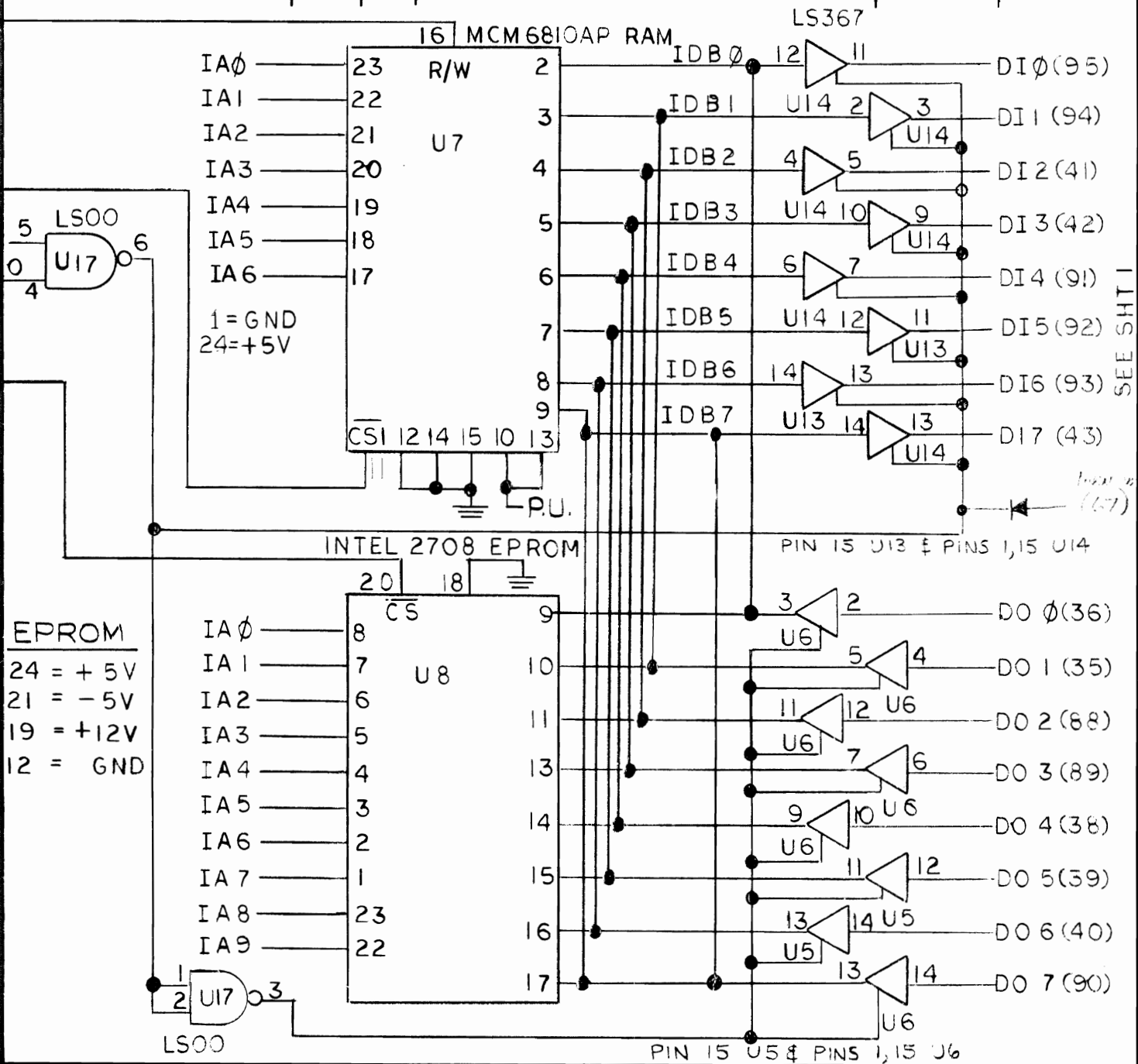
3

2

1

REVISIONS

ZONE	LTR	DESCRIPTION	DATE	APPROVED



D

C

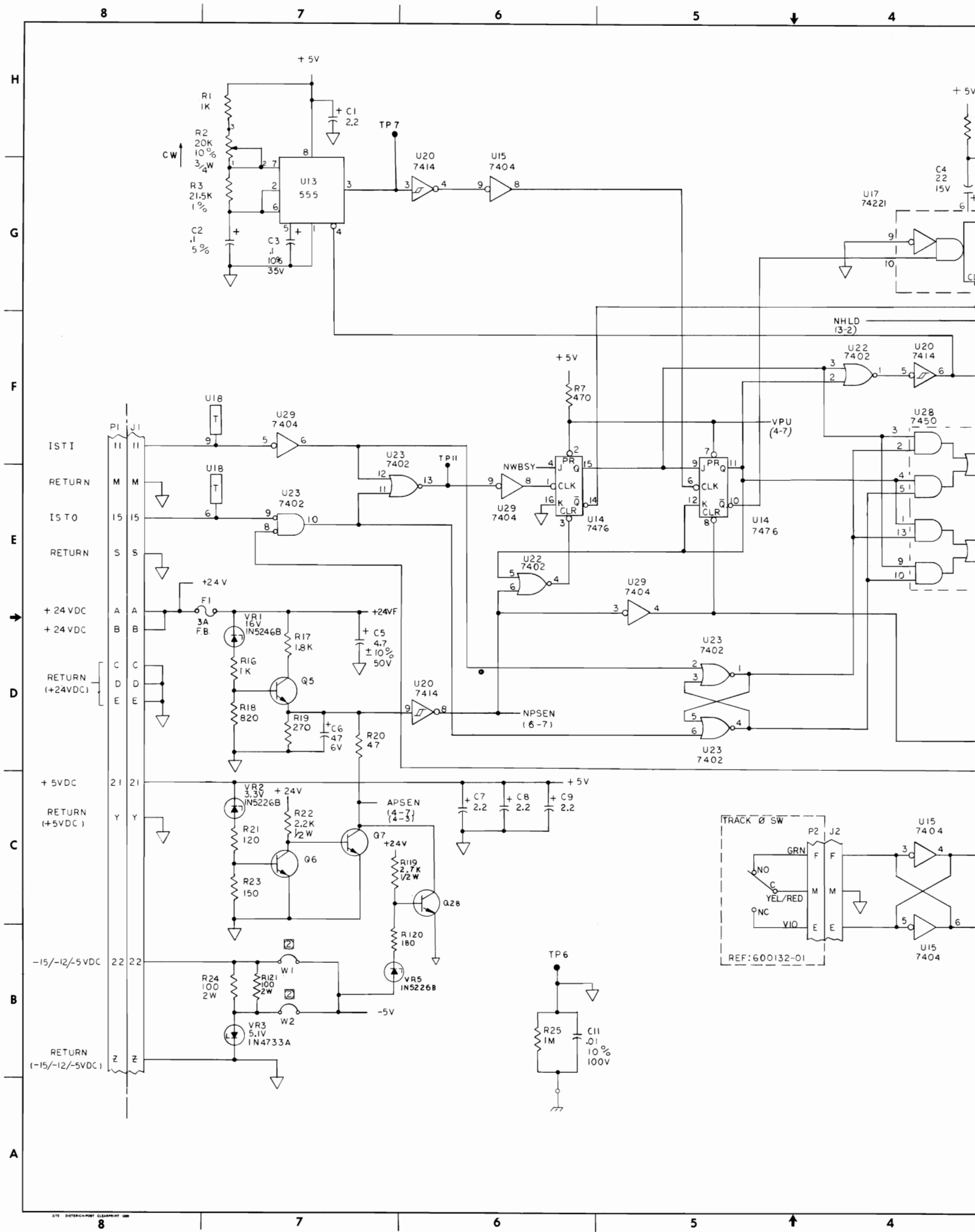
B

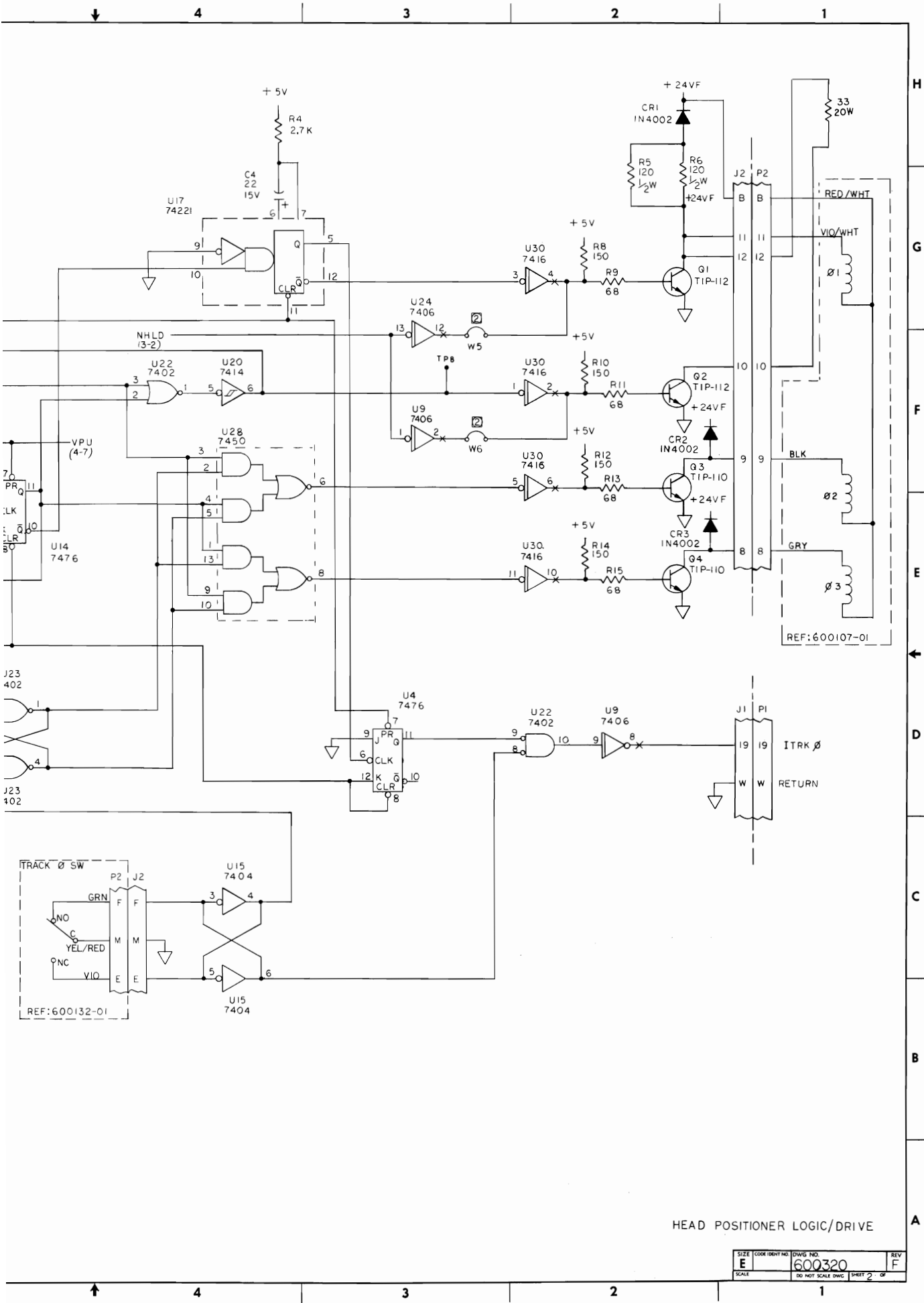
A

UNLESS OTHERWISE SPECIFIED DIMENSIONS ARE IN INCHES TOLERANCES ARE:		
FRACTIONS	DECIMALS	ANGLES
±	.XX ±	±
	.XXX ±	
MATERIAL		
FINISH		
DO NOT SCALE DRAWING		

CONTRACT NO.	
APPROVALS	DATE
DRAWN	
CHECKED	

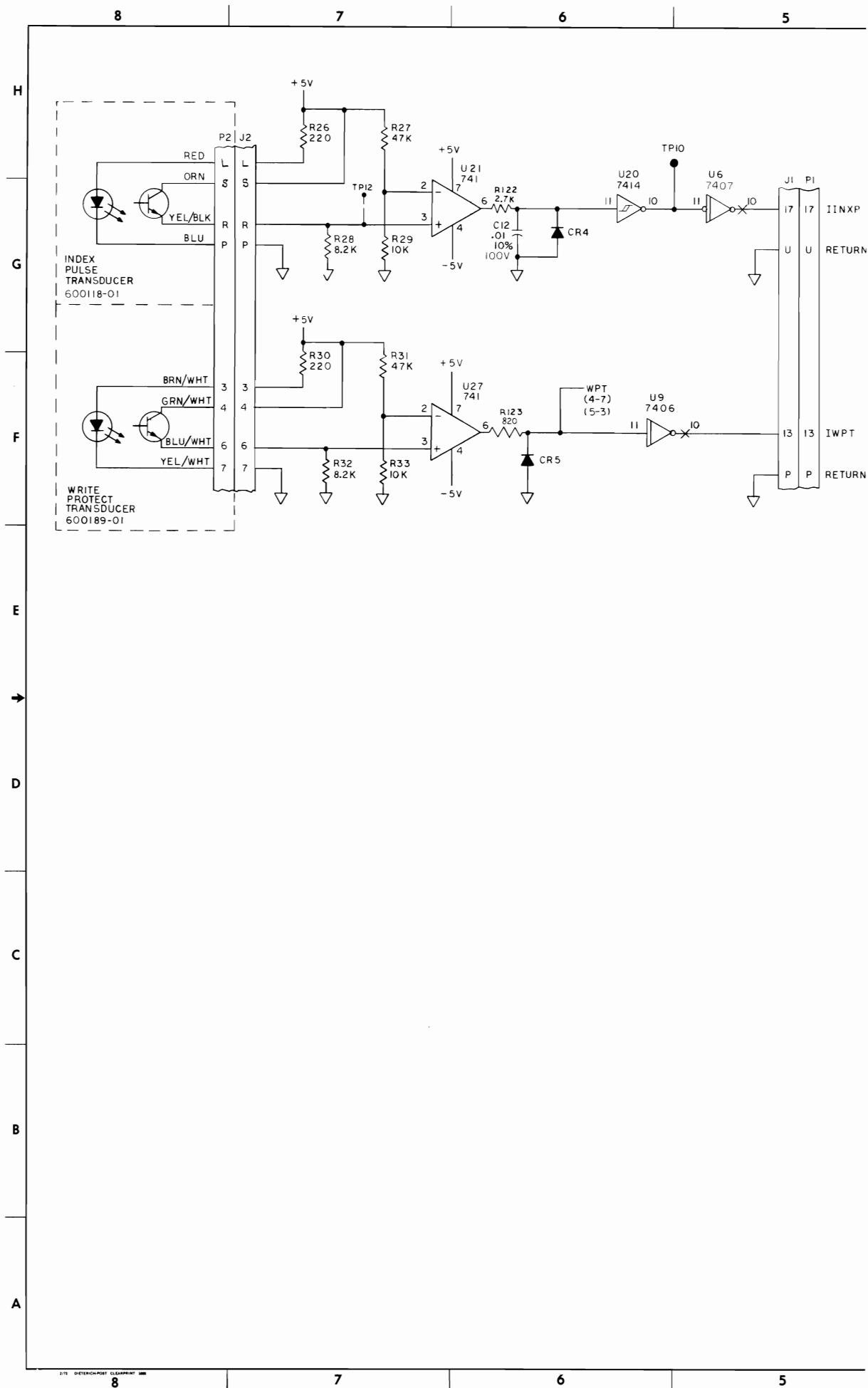
SCHEMATIC, 8800 INTERFACE		
SIZE	CODE IDENT NO.	DRAWING NO.
B		200057-200 B
SCALE		SHEET 3 OF 3

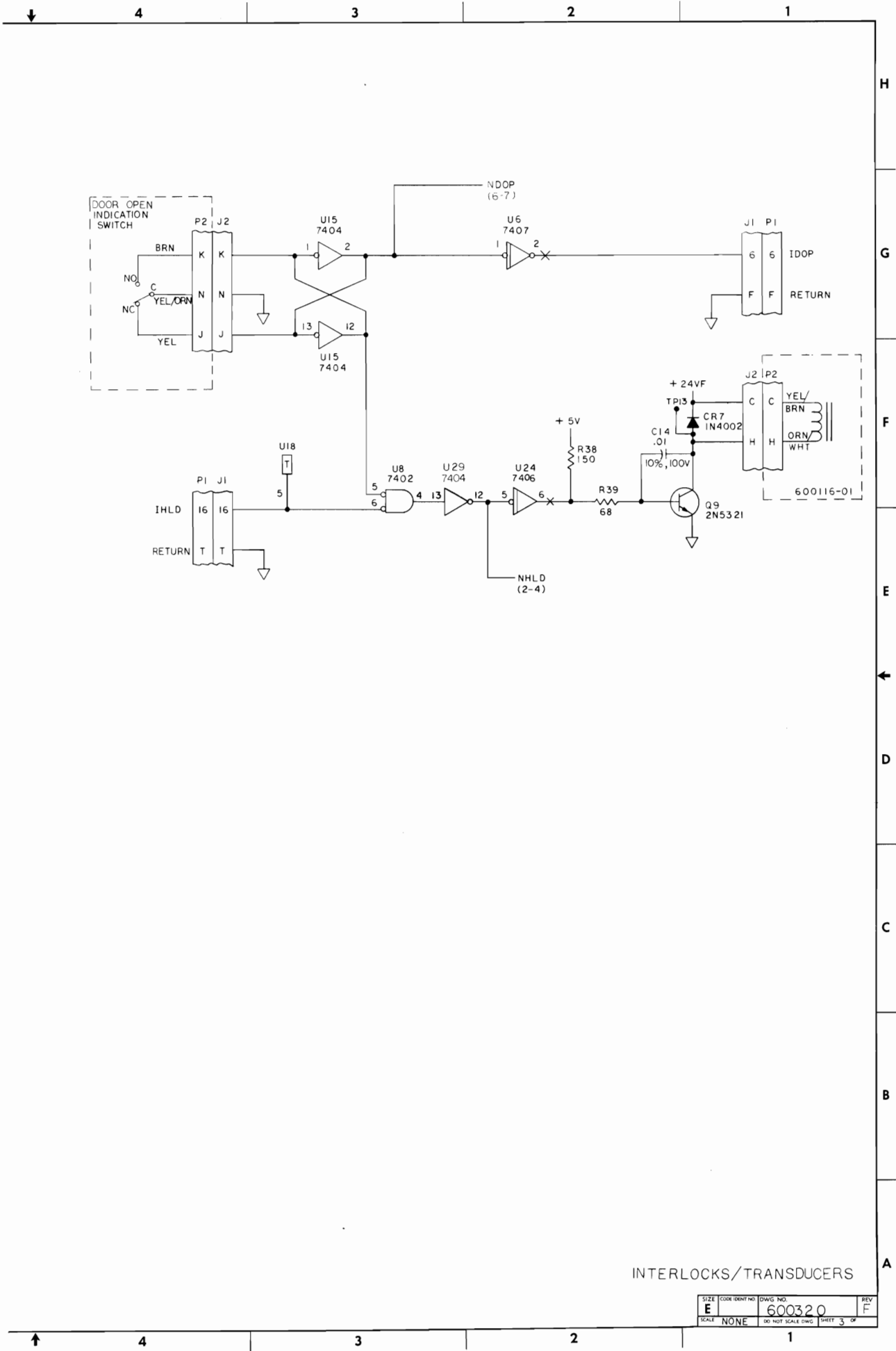




HEAD POSITIONER LOGIC/DRIVE

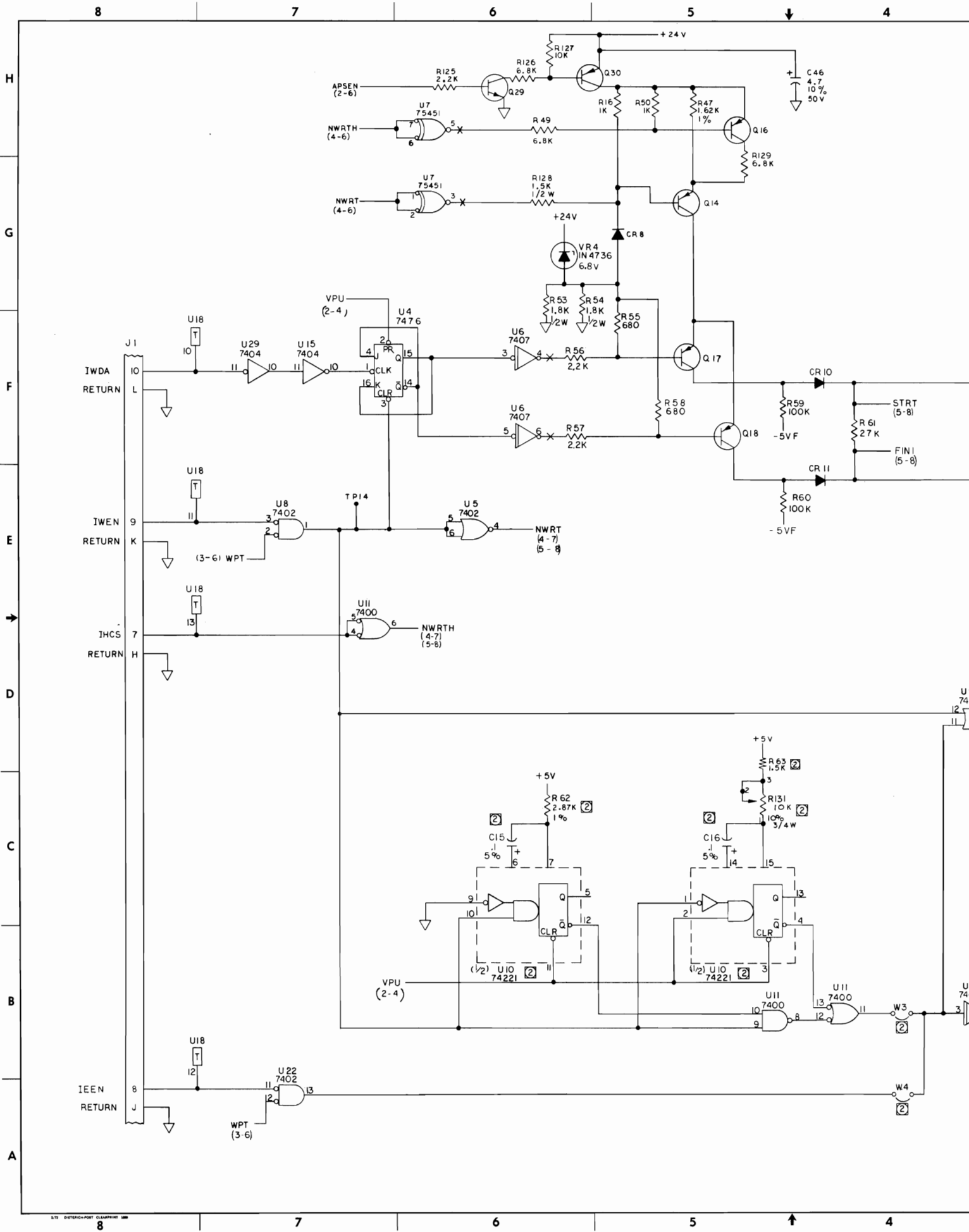
SIZE	CODE IDENT NO	DWG NO	REV
E		600320	F
SCALE	DO NOT SCALE DWG		SHEET 2 OF

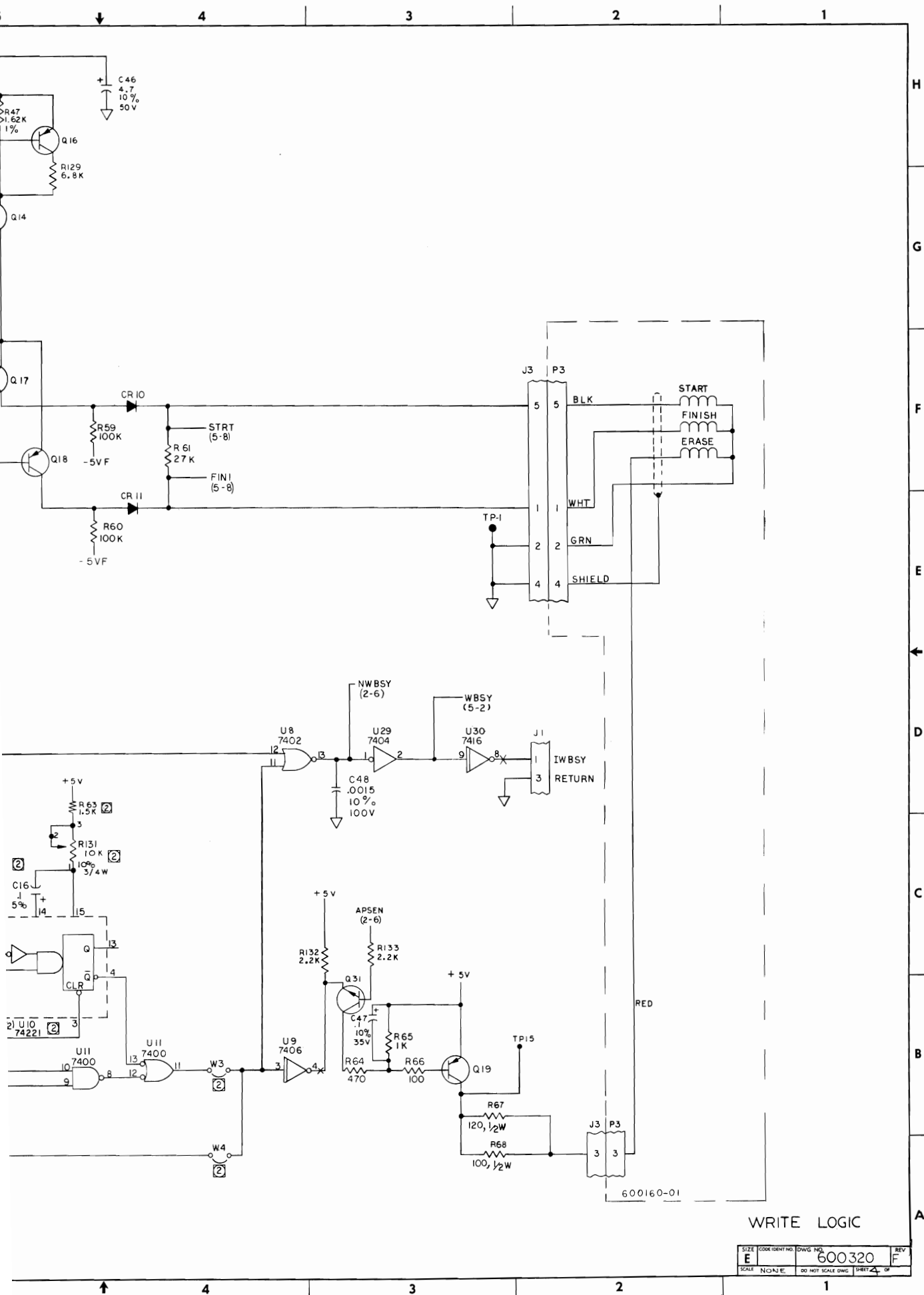




INTERLOCKS/TRANSDUCERS

SIZE	CODE IDENT NO	DWG. NO.	REV.
E		600320	F
SCALE	NONE	DO NOT SCALE DWG.	SHEET 3 OF



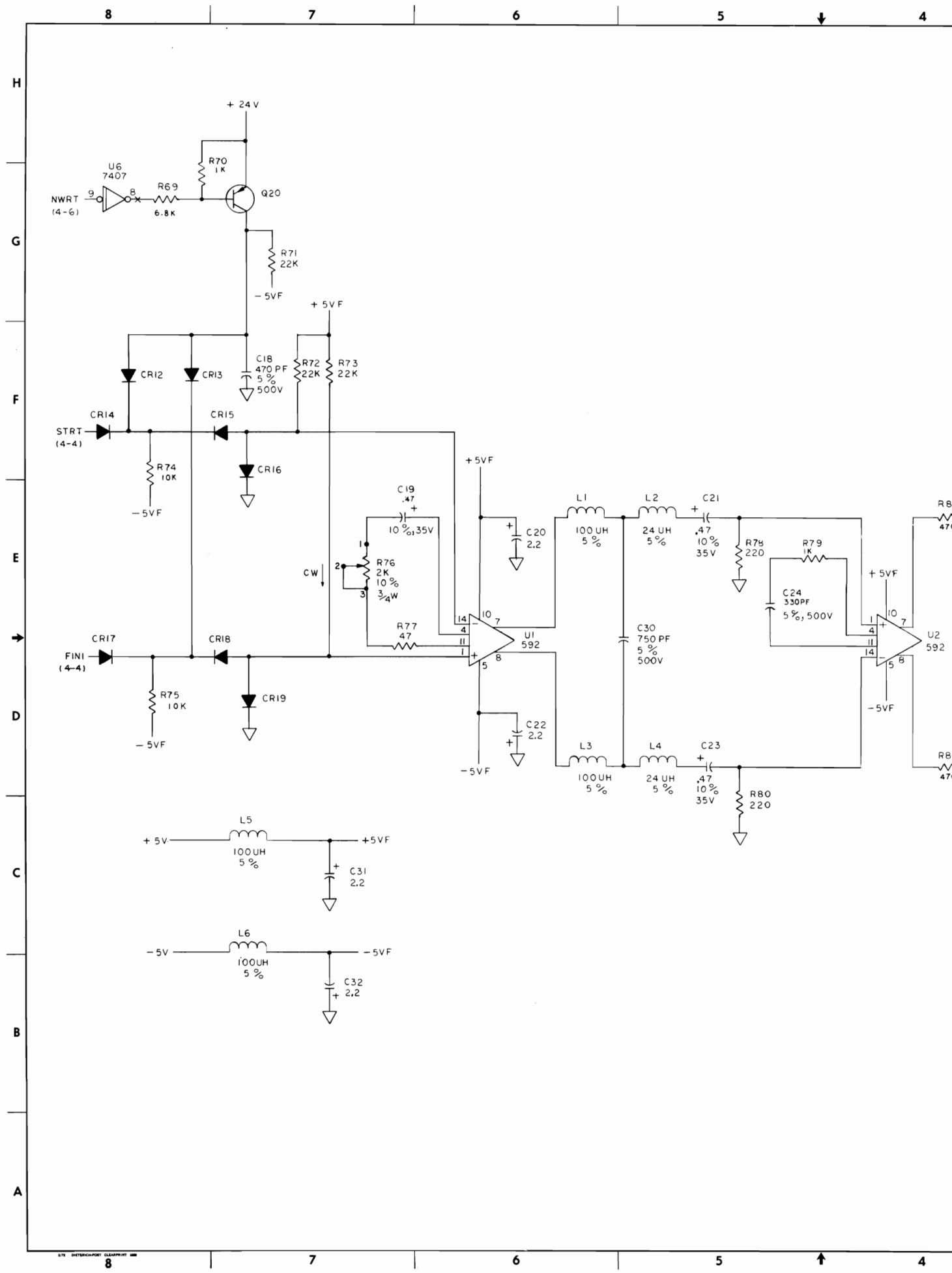


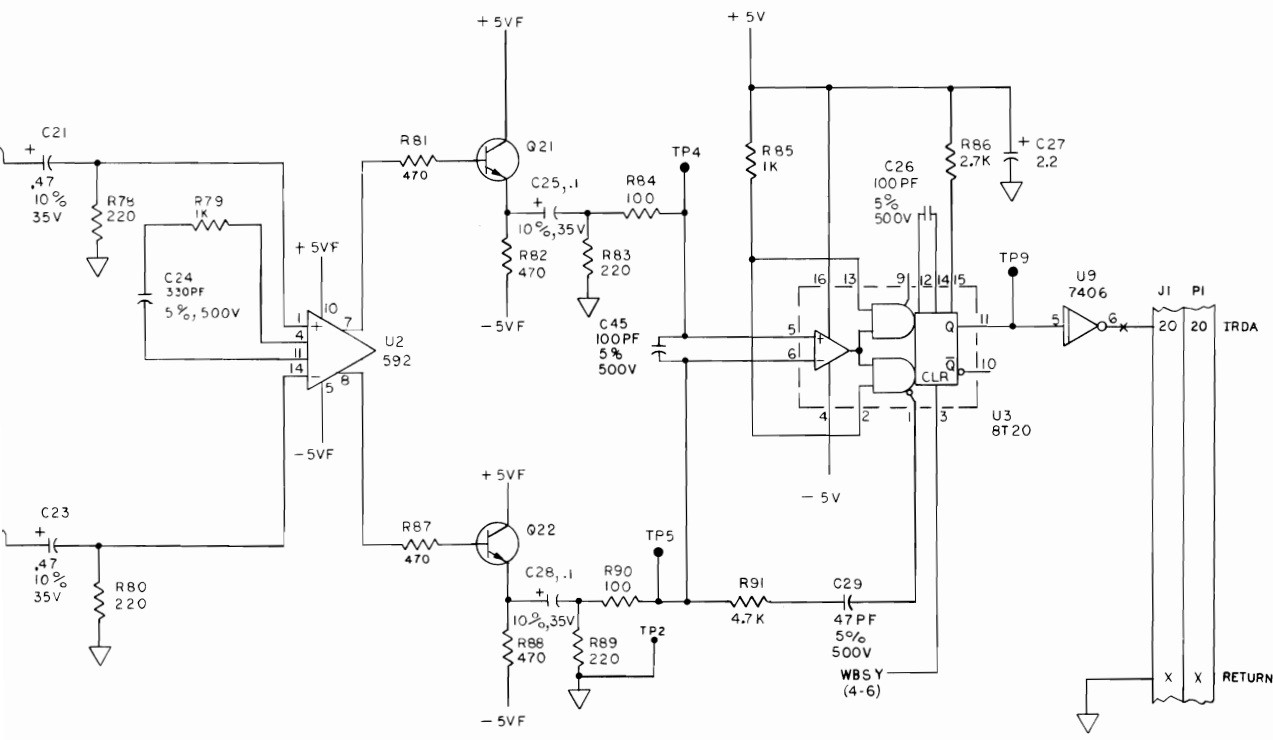
H
G
F
E
D
C
B
A

WRITE LOGIC

SIZE	CODE IDENT NO.	DWG. NO.	REV.
E		600320	F
SCALE		NON/E	DO NOT SCALE DWG. SHEET 4 OF 4

600160-01





READ AMPLIFIER

SIZE	COORDINATE NO.	DWG. NO.	REV.
E		600320	F
SCALE	NONE	DO NOT SCALE DWG.	SHEET 5 OF

8

7

6

5

4

H

G

F

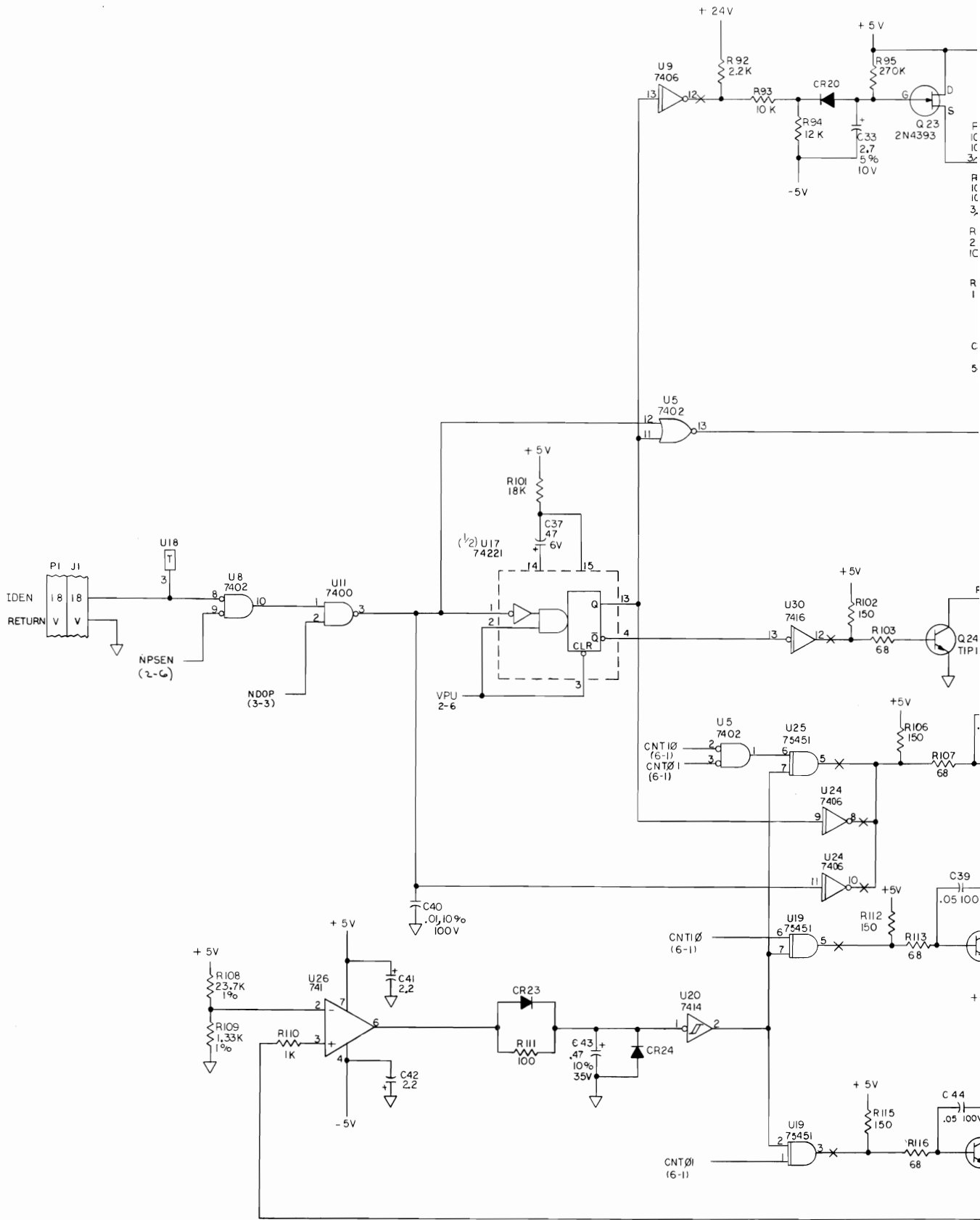
E

D

C

B

A



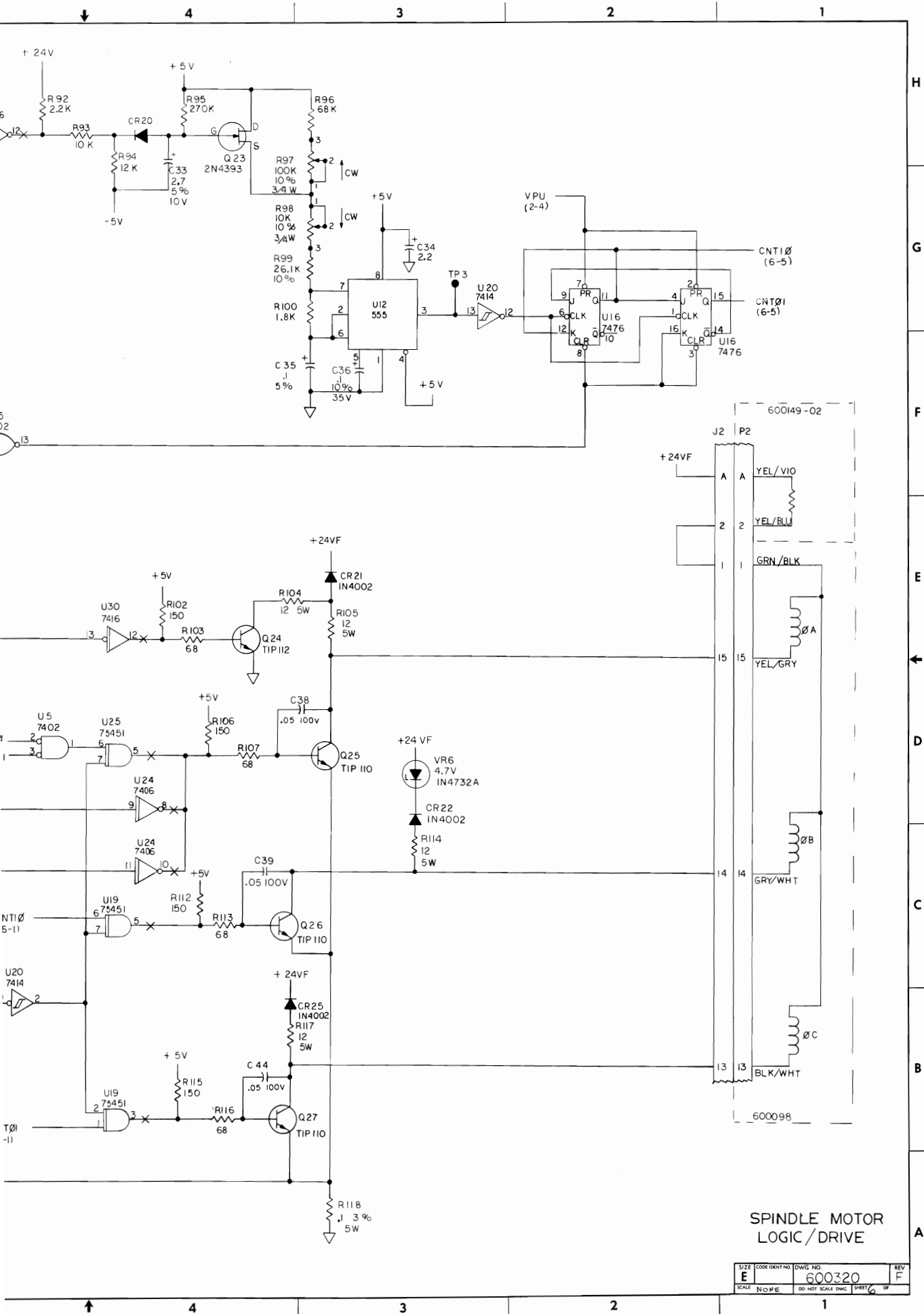
8

7

6

5

4



SPINDLE MOTOR
LOGIC/DRIVE

SIZE	CODE IDENT NO	DWG. NO.	REV
E		600320	F
SCALE	NOTE	DO NOT SCALE DWG	SHEET 6 OF

H

G

F

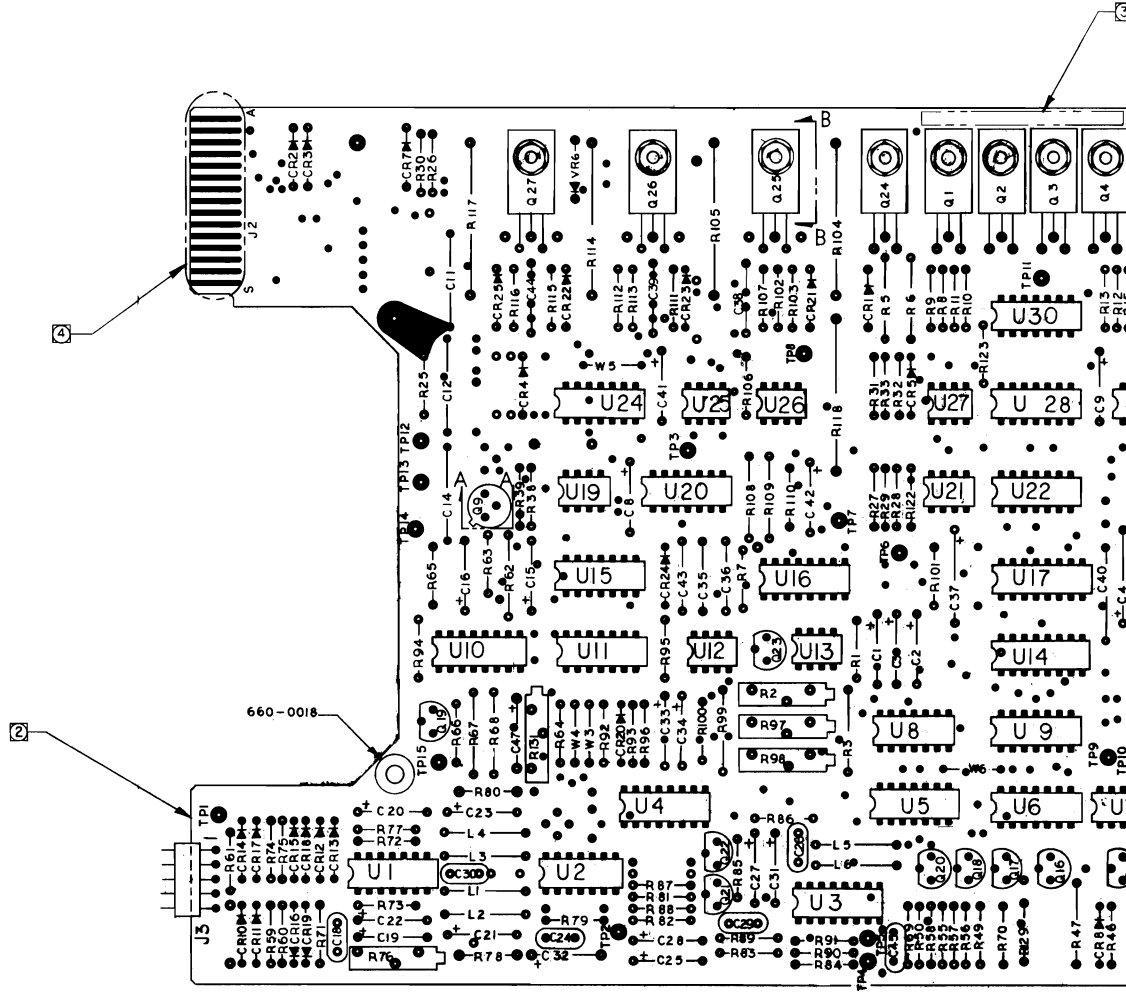
E

D

C

B

A



5. MAINTAIN MIN. AIR GAP OF .10
 BETWEEN COMPONENT BODY
 & BOARD FOR R104,R105,R114 R117 & R118

④ MASK AREAS SHOWN DURING FLOW SOLDER
 OPERATION.

③ MARK PART NUMBER 600321,VERSION NUMBER AND
 VERSION ISSUE LETTER IN AREA SHOWN.

② THIS ASSEMBLY SHALL BE MADE FROM PROCESS
 BOARD 600252-01 REV D AND SUBSEQUENT.

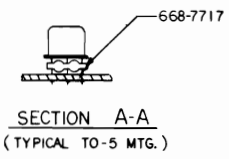
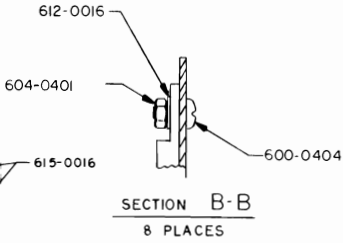
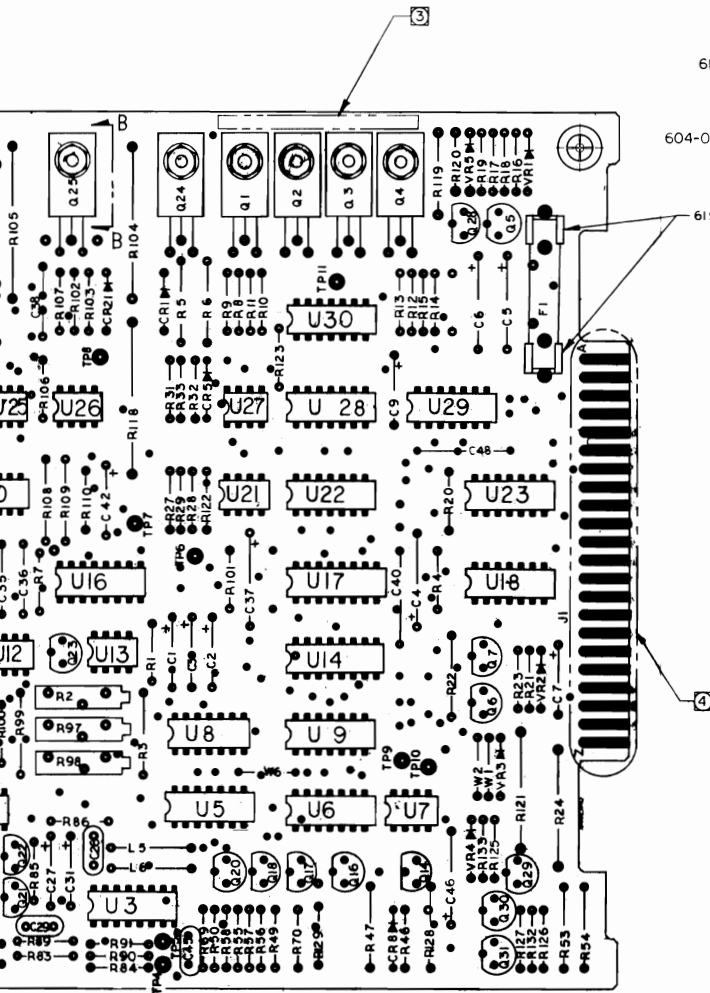
1. ASSEMBLE PER STANDARD MANUFACTURING METHODS.

NOTES: UNLESS OTHERWISE SPECIFIED



SECTION A
 (TYPICAL TO-5)

REVISIONS					
REV	DESCRIPTION	DATE	DR	CHK	APPR
A	ERN 200-FB PRE-PROD. RELEASE	5/17/76	DMC	WV	WV
B	ECN 30467A	5/24/76	ML	WV	WV
C	ERN 200-GP PROD REL	5/24/76	ML	WV	WV
D	ECN 30462A	5/24/76	ML	WV	WV
	ECN 30467	5/18/76	RJ	WV	WV



SCHEMATIC 600320
 REF DWGS:
 PART NO. 600321- REV

<small>The information herein is the property of PERTEC CORPORATION. Its use is limited to the specific application for which it was prepared. It is not to be used for other applications without specific written consent of PERTEC.</small> <small>UNLESS OTHERWISE SPECIFIED</small> DIMENSIONS ARE IN INCHES TOLERANCES: FRACTIONS: ANGLES: ± 1/2° DECIMALS: ± 0.005 HOLE DIA: ± 0.005 BREAK ALL SHARP CORNERS APPROX. 210	SIGNATURES		DATE	PERTEC PERIPHERAL EQUIPMENT TITLE PCBA, FD, BASIC II, DC
	DR: <i>GLDAG</i>	CHK: <i>R. Eason</i>	DES: <i>WV</i>	
FINISH:	MATL: SEE LM	SIZE: E	CODE IDENT NO: 600321	REV: D
NEXT ASSY	1ST USED ON	SCALE: 2/1	DO NOT SCALE DWG	SHEET 1 OF 1

H
G
F
E
D
C
B
A

600321

8

7

6

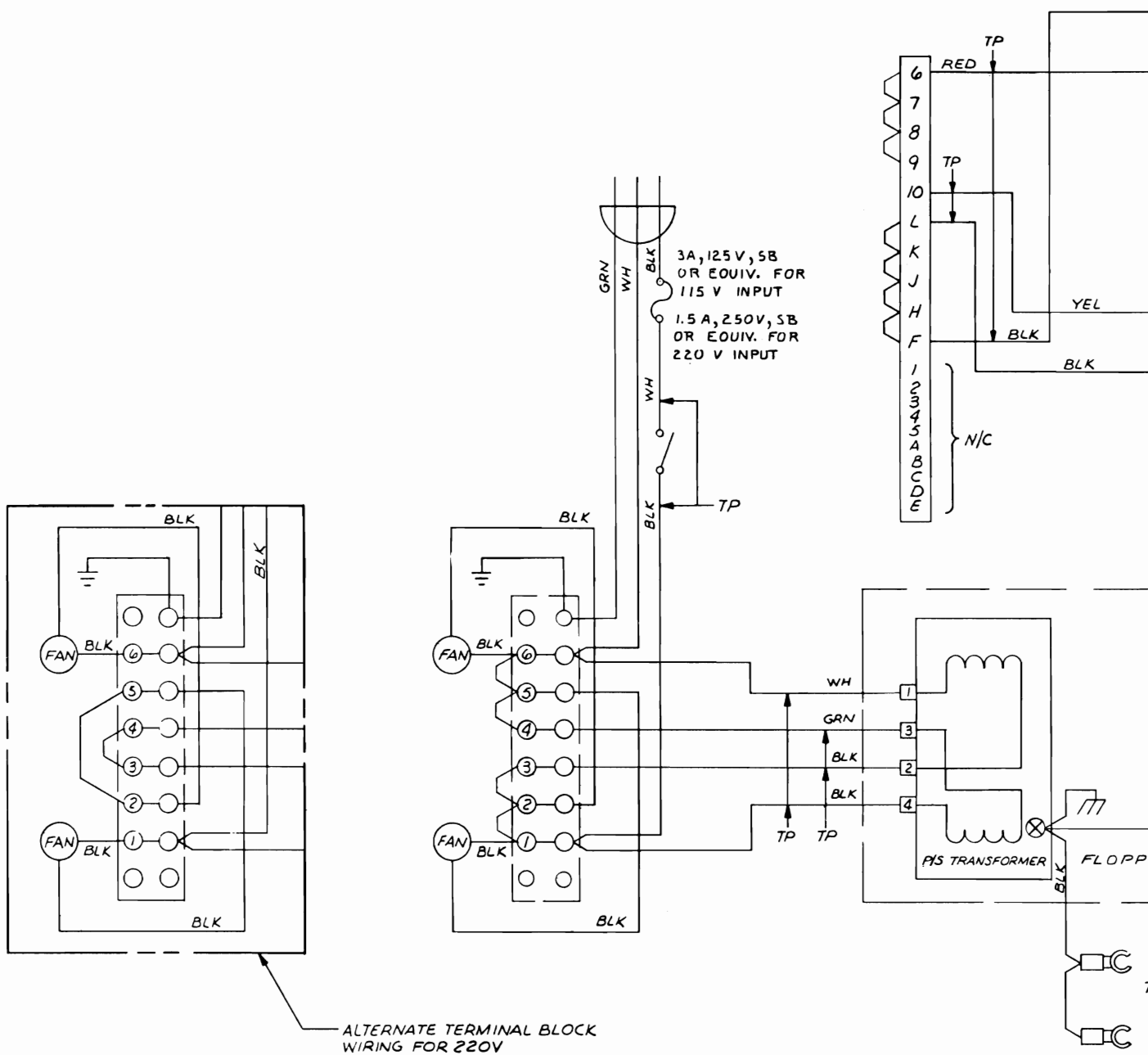
5

D

C

B

A



ALTERNATE TERMINAL BLOCK WIRING FOR 220V

1. 'TP' INDICATES TWISTED PAIR WIRES.

NOTES: UNLESS OTHERWISE SPECIFIED.

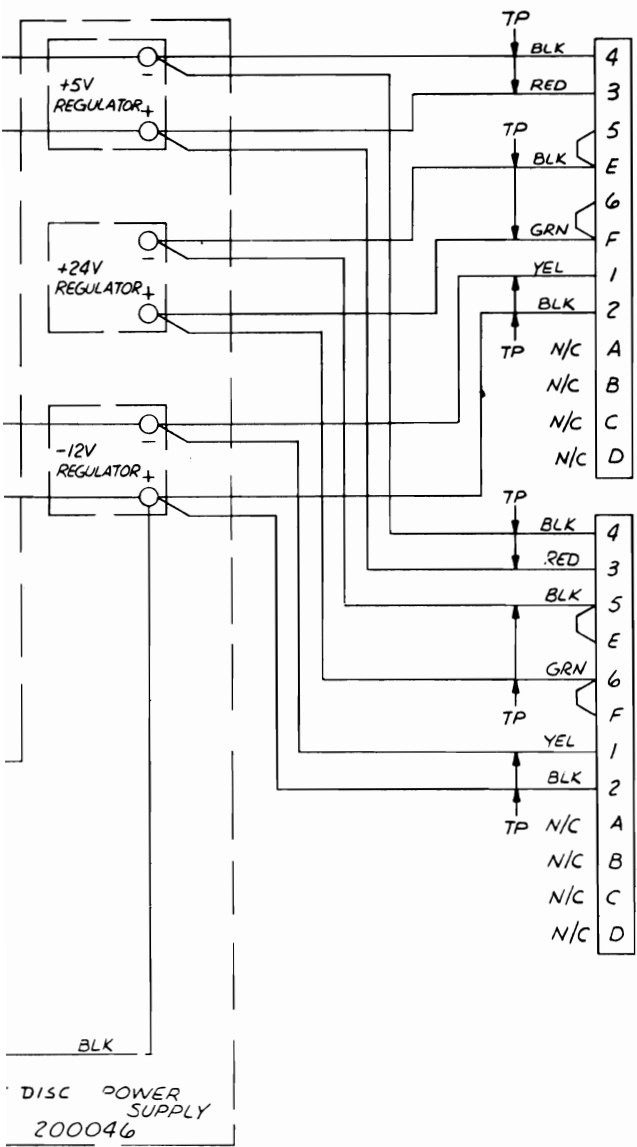
8

7

6

5

REVISIONS				
ZONE	LTR	DESCRIPTION	DATE	APPROVED



CHASSIS
ON DRIVERS

D
C
B
200042-200

QTY REQD	CODE IDENT	PART OR IDENTIFYING NO.	NOMENCLATURE OR DESCRIPTION
PARTS LIST			
UNLESS OTHERWISE SPECIFIED DIMENSIONS ARE IN INCHES TOLERANCES ARE:		CONTRACT NO.	FD360 POWER SCHEMATIC
FRACTIONS	DECIMALS	ANGLES	
±	.XX ±	±	APPROVALS
	.XXX ±		DATE
MATERIAL			DRAWN <i>Clark</i> 5/22/76
			CHECKED <i>P.D. Jan</i> 5/21/76
FINISH			
NEXT ASSY	USED ON	SIZE	CODE IDENT NO. DRAWING NO.
		D	200042-200
APPLICATION	DO NOT SCALE DRAWING	SCALE	SHEET / OF /
		NONE	

A

4

3

2

1

8

7

6

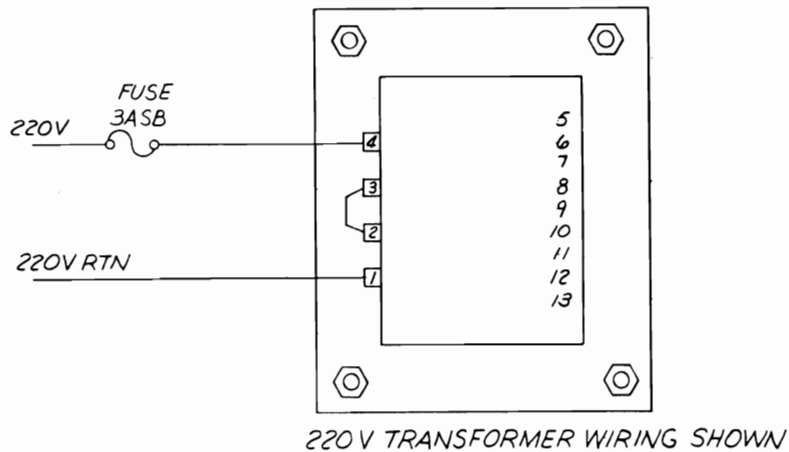
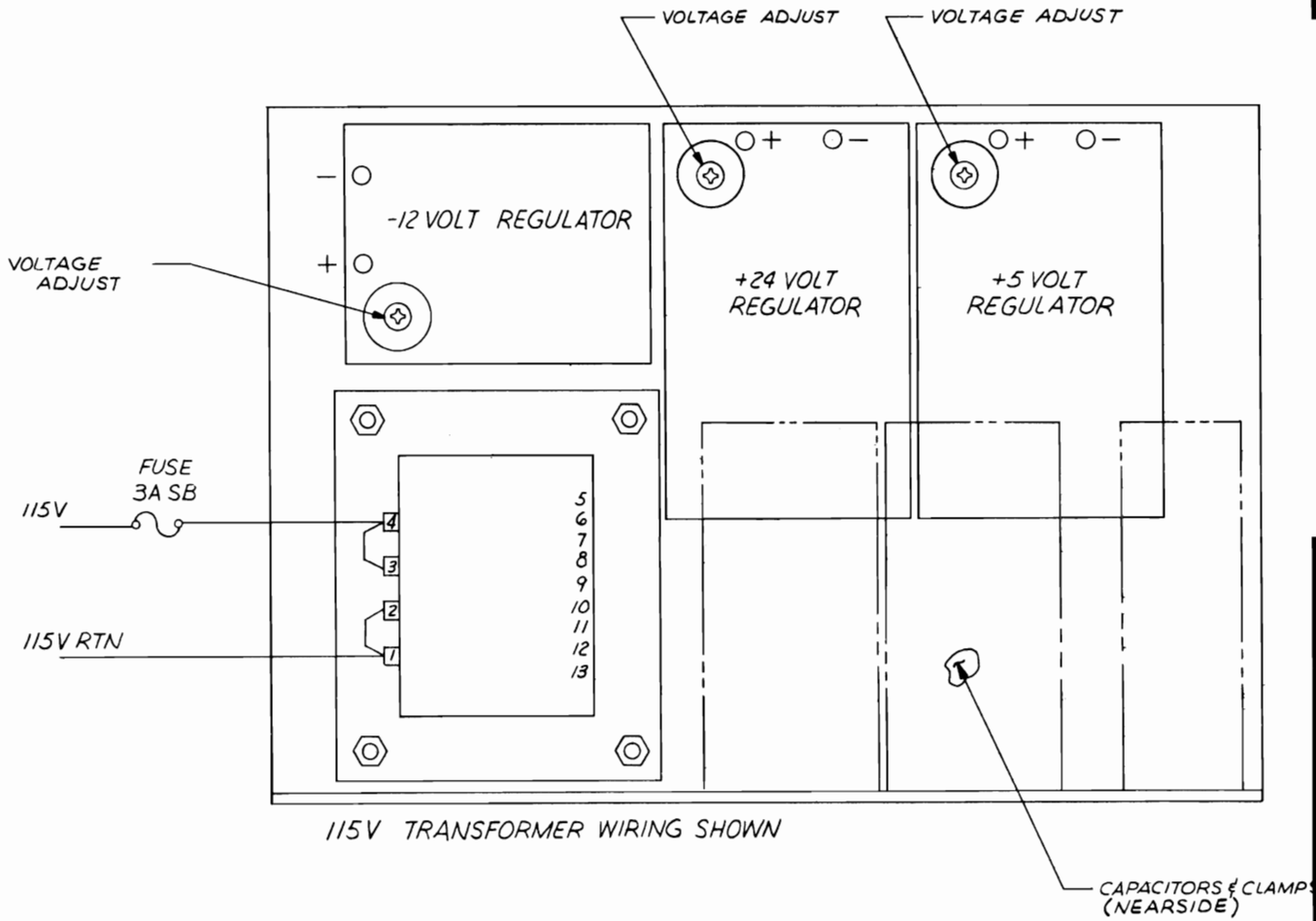
5

D

C

B

A



1. FOR WIRING DIAGRAM SEE IC
 NOTES: UNLESS OTHERWISE SPEC

8

7

6

5

4

3

2

1

REVISIONS				
ZONE	LTR	DESCRIPTION	DATE	APPROVED

D


C

B

A

200046

REMOVED FOR CLARITY

QTY REQD	CODE IDENT	PART OR IDENTIFYING NO.	NOMENCLATURE OR DESCRIPTION
PARTS LIST			
UNLESS OTHERWISE SPECIFIED DIMENSIONS ARE IN INCHES TOLERANCES ARE:		CONTRACT NO.	
FRACTIONS ±	DECIMALS .XX ± .XXX ±	ANGLES ±	APPROVALS
MATERIAL			DATE
FINISH			DRAWN <i>Cook</i> 5/23/76
NEXT ASSY			CHECKED <i>J.P. Sen</i> 5/27/76
USED ON			SIZE
APPLICATION			CODE IDENT NO.
DO NOT SCALE DRAWING			DRAWING NO.
			D
			200046
			SCALE FULL
			SHEET 1 OF 1

OM DWG NO. 200042-200.
FIED

4

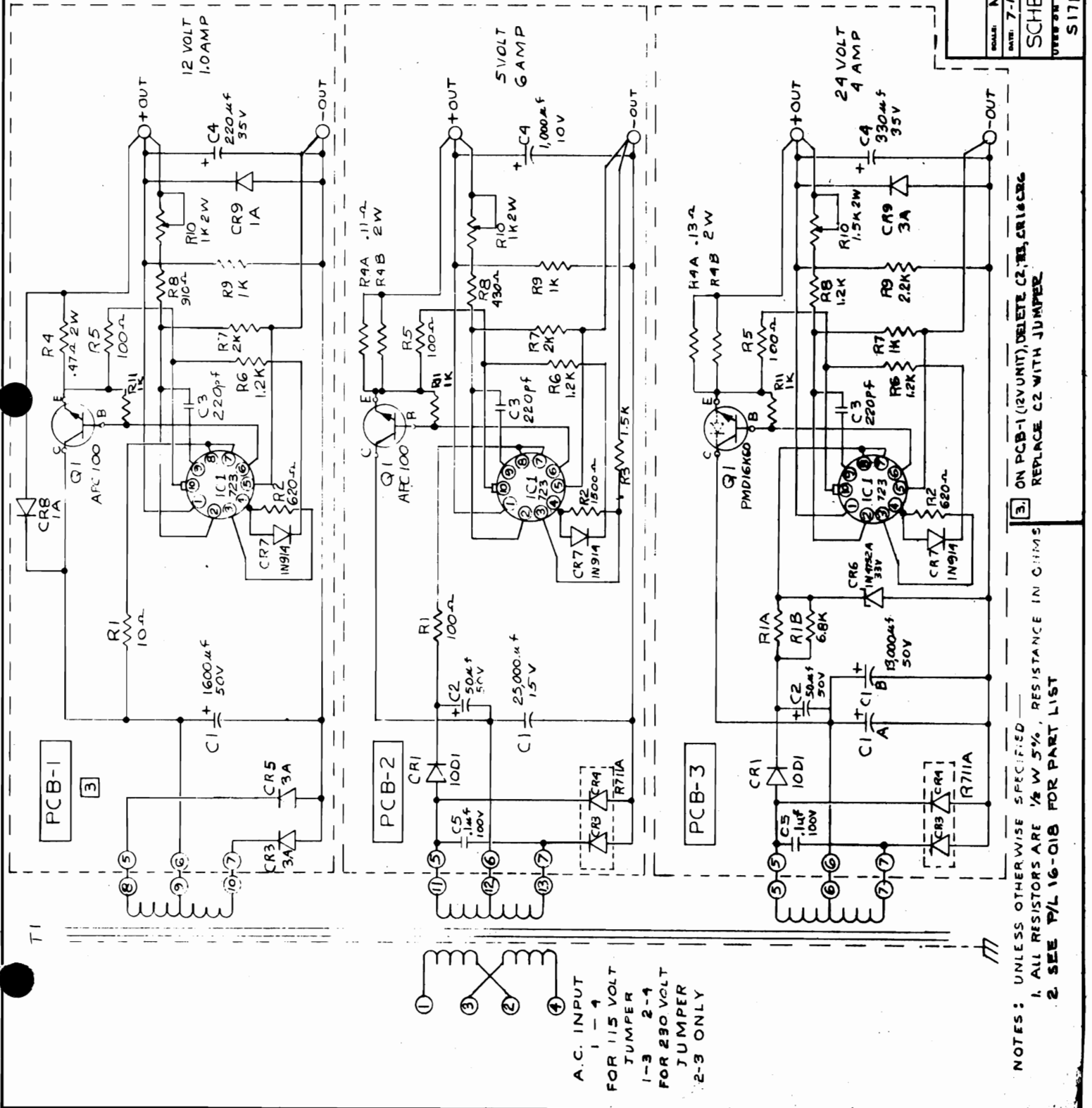
3

2

1

REV	REVISION	REC	BY	APP
A	CR5 WAS CR5 (PCB-1) REF DES. CHANGED TO AGREE WITH P.C. BOARD		CH	8-8-75
B	ADDED R11 TO PCB-1-2-3		CH	8-8-75
C	ADDED C5 TO PCB 3		CH	8-8-75
D	R8 1.2K WAS 1K		CH	8-8-75
	ADDED NOTE 3			

ADTECH POWER, INC. ANAHEIM, CALIF.	
DATE: 7-10-75	REV: 1
SCALE: N/A	APPROVED BY: [Signature]
SCHEMATIC, POWER SUPPLY	
WORKING NO. S171	REV. D

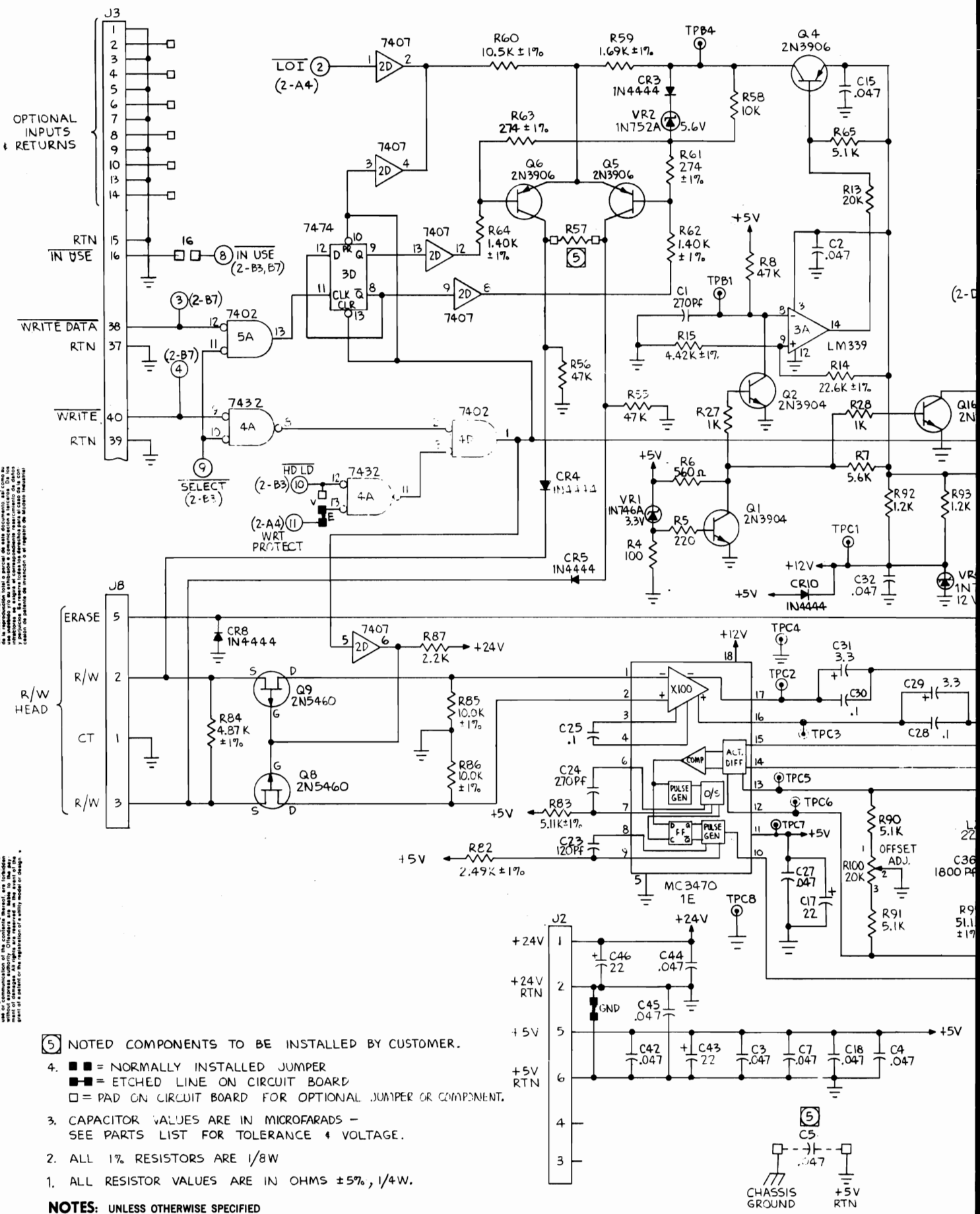


D

C

B

A



5 NOTED COMPONENTS TO BE INSTALLED BY CUSTOMER.

- 4. ■ = NORMALLY INSTALLED JUMPER
 - = ETCHED LINE ON CIRCUIT BOARD
 - = PAD ON CIRCUIT BOARD FOR OPTIONAL JUMPER OR COMPONENT.
3. CAPACITOR VALUES ARE IN MICROFARADS - SEE PARTS LIST FOR TOLERANCE & VOLTAGE.
2. ALL 1% RESISTORS ARE 1/8W
1. ALL RESISTOR VALUES ARE IN OHMS ±5%, 1/4W.

NOTES: UNLESS OTHERWISE SPECIFIED

Copying of this document and giving it to others, and the use of the information contained herein, is prohibited without the express written permission of the manufacturer. The manufacturer assumes no responsibility for the use of the information contained herein in connection with any patent or other intellectual property rights. The manufacturer is not responsible for any damage or loss of data resulting from the use of the information contained herein.

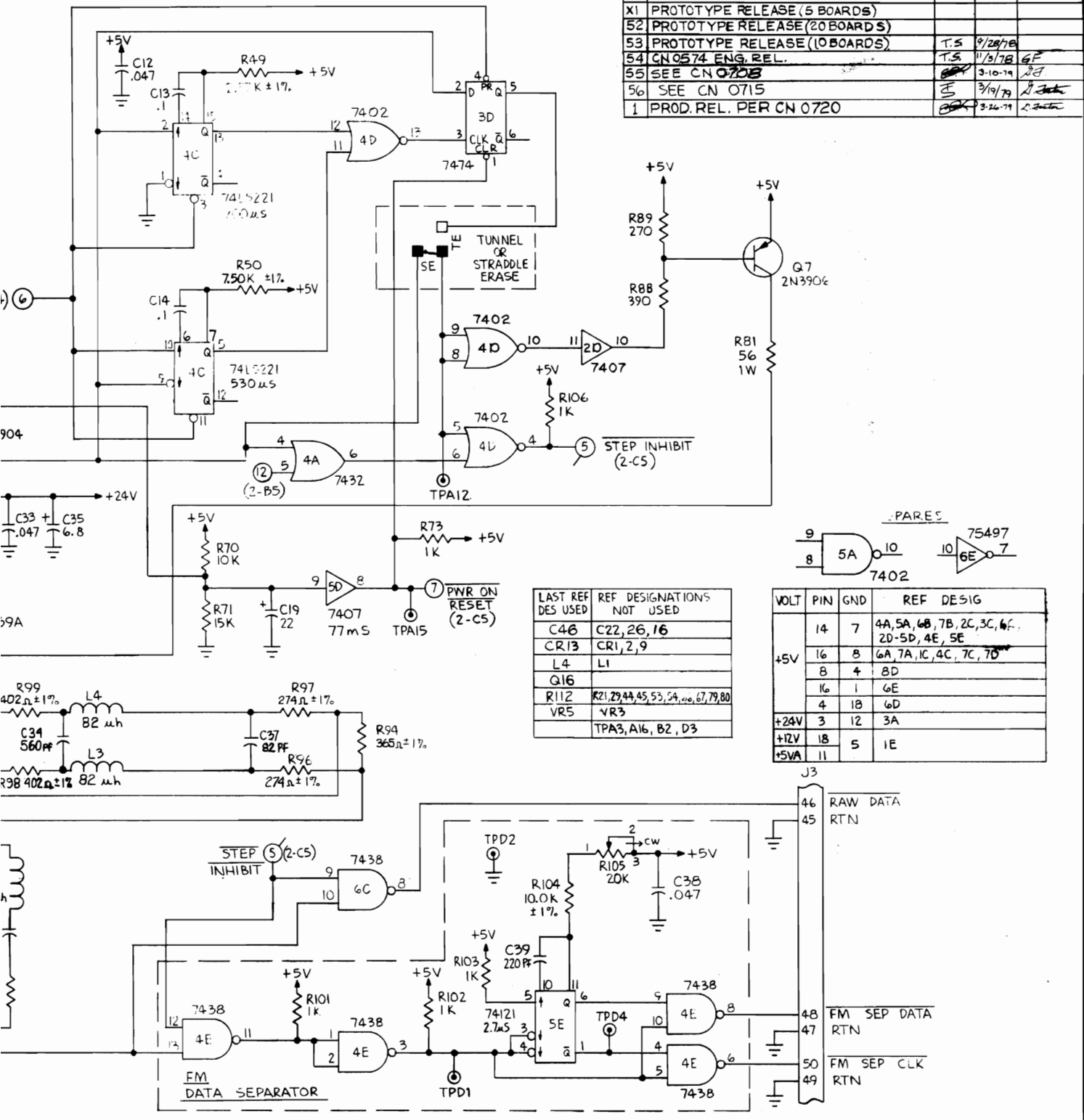
4

3

2

1

REVISIONS				
SYM	DESCRIPTION	BY	DATE	APPROVED
X1	PROTOTYPE RELEASE (5 BOARDS)			
52	PROTOTYPE RELEASE (20 BOARDS)			
53	PROTOTYPE RELEASE (10 BOARDS)	T.S	9/28/78	
54	CN 0574 ENG. REL.	T.S	11/3/78	GF
55	SEE CN 0703		3-10-79	GF
56	SEE CN 0715		3/19/79	GF
1	PROD. REL. PER CN 0720		3-26-79	GF



LAST REF DES USED	REF DESIGNATIONS NOT USED
C46	C22, 26, 16
CR13	CR1, 2, 9
L4	L1
Q16	
R112	R21, 29, 44, 45, 53, 54, 56, 67, 79, 80
VRS	VRS
	TPA3, A16, B2, D3

PARES

VOLT	PIN	GND	REF DESIG
+5V	14	7	4A, 5A, 6B, 7B, 2C, 3C, 6F
	16	8	2D-5D, 4E, 5E
	8	4	8D
	16	1	6E
	4	18	6D
+24V	3	12	3A
+12V	18	5	1E
+5VA	11		

QTY REQD	PART NO.	DESCRIPTION	ITEM NO.
MATERIAL LIST			
NOTES UNLESS SPECIFIED		DRAWN	1/24/79
1 TOLERANCES		CHECK	G F 3-21-79
XX ANGULAR		APPR	G F 3-21-79
XXX 0/30		RELEASE	
2 REMOVE ALL BURRS		Siemens AG	
3 BREAK ALL SHARP EDGES			
4 MACH SURFACES 125/			
5 DIM ARE IN INCHES			
6 DIM ARE IN MILLIMETERS		MODEL NO.	
MATERIAL:		TITLE	
FINISH:		SCHEMATIC DIAGRAM	
NEXT ASSY		FDD100-8D-READ/WRITE	
QTY		AND CONTROL LOGIC	
		SIZE	DWG NO.
		D A22741-L001-X000 #11	
		SCALE	DO NOT SCALE DWG
		SHEET	1
		OF 2	

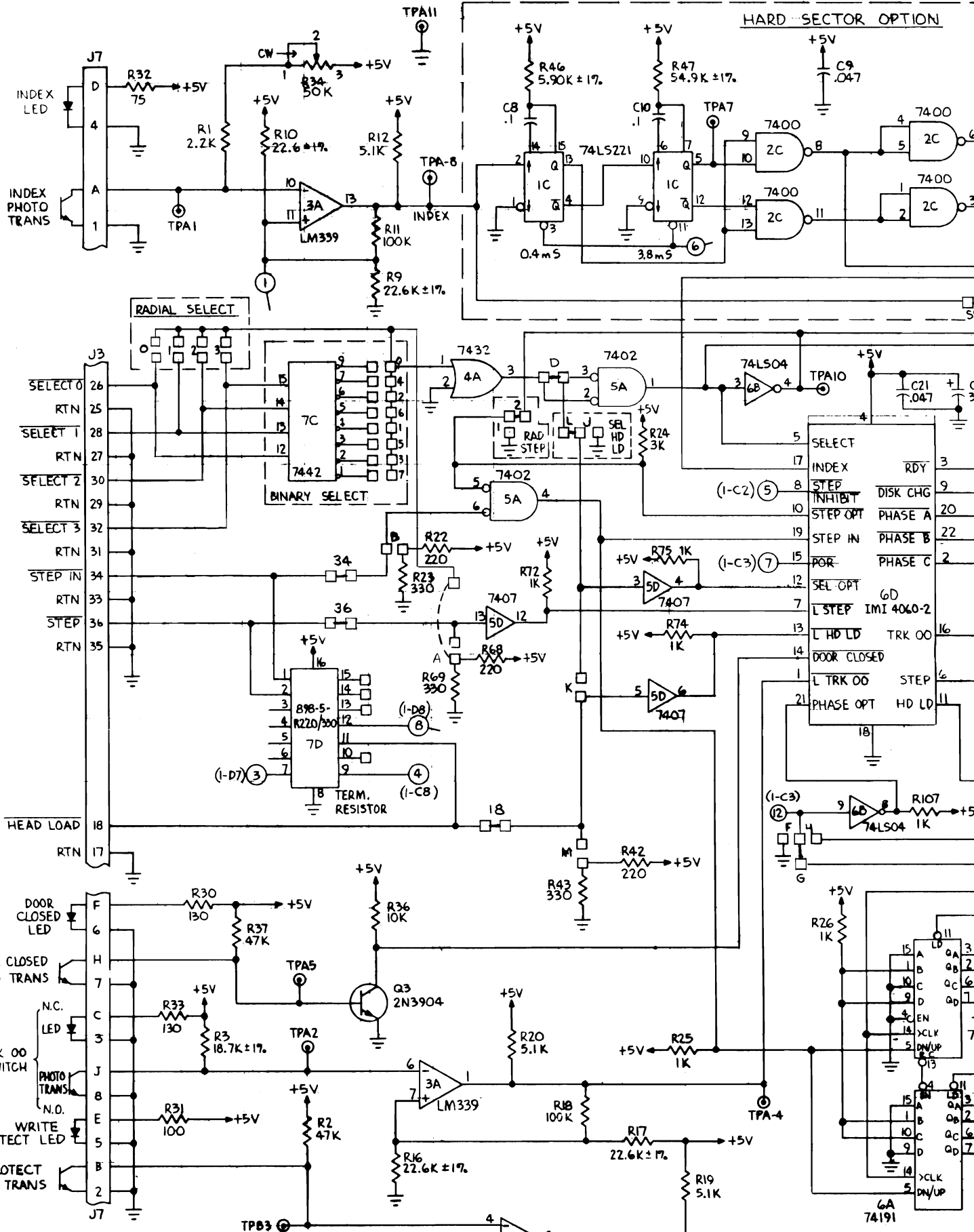
D

C

B

A

A22741-L001-X000 #11



HARD SECTOR OPTION

RADIAL SELECT

BINARY SELECT

TERM. RESISTOR

NOTES: UNLESS OTHERWISE SPECIFIED
SEE SHEET 1

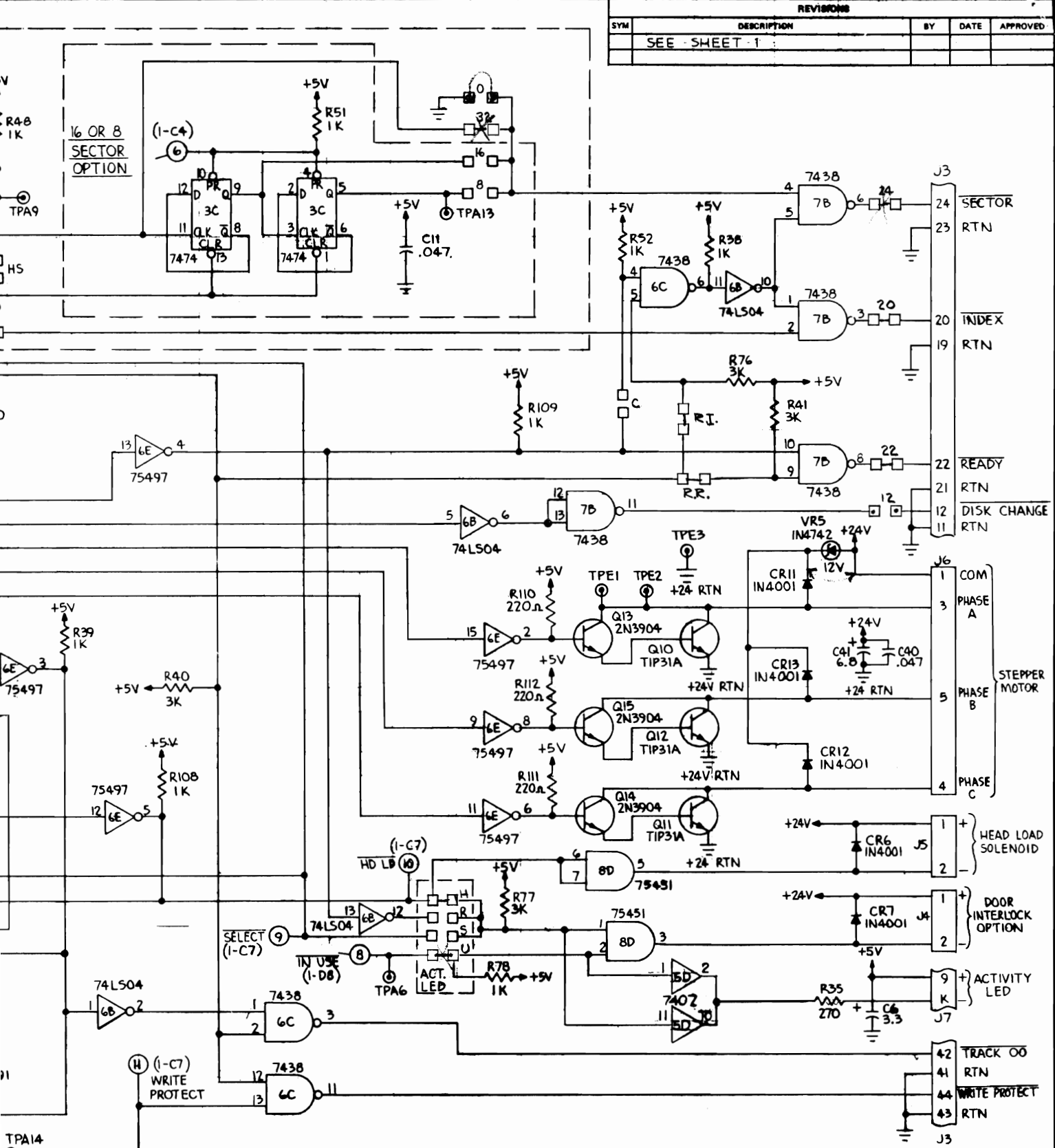
D

C

B

A

REVISIONS				
SYM	DESCRIPTION	BY	DATE	APPROVED
	SEE SHEET 1			



QTY	PART NO.	DESCRIPTION	TRF. NO.
MATERIAL LIST			
NOTES UNLESS SPECIFIED			
1 TOLERANCES	DRAWN	STENANT	6/2/78
2 CHECK	G.F.	3-4-78	
3 APPROV	G. FORTNER	2-1-78	
4 RELEASE			
Siemens AG			
MODEL NO. FDD 100-8D			
TITLE			
SCHEMATIC DIAGRAM, READ/WRITE AND CONTROL LOGIC			
MATERIAL:			
FINISH:			
NEXT ASSY			
QTY			
SCALE			
DO NOT SCALE DIMS			
SHEET 2 OF 2			